

HENNLICH ENGINEERING is the leading manufacturer of telescopic loading spouts – we have been producing them since 1996.

We create customized solutions for your bulk solid loading needs.

Our bulk loading spouts eliminate dust, eradicate material losses and increase safety when working with bulk solids.

BENEFITS

control of dust pollution
 avoidance of penalties imposed by authorities for dust
 increased safety & cleaner environment
 unit assembly construction
 easy maintenance & simple operation
 long durability
 three cable lifting system
 complete range and flow rates

The loading spout is designed with the following parameters:

- product handled
- product physical properties (abrasive, corrosive, explosive, hygroscopic etc.)
- volume of loading capacity
- particle size
- bulk density
- construction dimensions (retracted and extended length)
- temperature (ambient, product)

Chapter	Type	Line	Type of loading
1.1.1.	NZU300E	Ekonomik	tanker trucks and closed railcars
1.1.2.	NZU300VR	Ekonomik	tanker trucks and closed railcars
1.1.3.	NZUF300E	Ekonomik	tanker trucks and closed railcars
1.2.1.	NZU300S	Standard	tanker trucks and closed railcars
1.2.2.	NZU300R	Standard	tanker trucks and closed railcars
1.3.			tanker positioner
2.1.1.	NZO300E	Ekonomik	open trucks and railcars
2.1.2.	NZOF300E	Ekonomik	open trucks and railcars
2.1.3.	NZOF400E	Ekonomik	open trucks and railcars
2.2.1.	NZO400S	Standard	open trucks and railcars
2.2.2.	NZO500S	Standard	open trucks and railcars
2.2.3.	NZO1000S	Standard	open trucks and railcars
2.3.1.	NZO600H	Heavy	open trucks and railcars
2.3.2.	NZO800H	Heavy	open trucks and railcars
3.1.1.	NZO300S	Standard	stockpiles, ship loading
3.2.1.	NZO600DH	Heavy	stockpiles, ship loading
3.2.2.	NZO900DH	Heavy	stockpiles, ship loading
4.1.1.	NZK300ER	Ekonomik	combined loading
4.1.2.	NZKF300ER	Ekonomik	combined loading
5.1.1.	NZO800S	Heavy	ship loading

DESCRIPTION

telescopic loading spout for dust-free loading of dry, dusty bulk solids into tankers

OPERATION QUALITIES

- max. flow rate 250 m³/h
- particle size 0 - 40 mm
- inlet diameter DN300
- pipe Ø125 mm for connection to external filtration
- operating temperature -20 °C / +80 °C
- motor drive 0.55 kW
- loading conduit consisting of internal cones and double bellows

DESIGN

- electric winch with limit switches for highest and lowest position, emergency sensors for highest and lowest positions
- terminal box for cable connection
- level switch – rotary / vibrating / capacitance type
- bottom closing cone to prevent any spillage of dust as the loading spout is being raised

ADDITIONAL ACCESSORIES

- electric control box
- pendant or remote control
- vibration unit
- shut off valves (manual, electro, pneumatic)
- design for ATEX / non-standard temperature (-40 °C / +250 °C)

L _{min} (retracted length)	L _{max} (extracted length)	Travel (H)	Weight
With rotary / capacitance switch			
1200	2700	1500	137
1300	3300	2000	141
1400	3900	2500	161
1500	4500	3000	177

L _{min} (retracted length)	L _{max} (extracted length)	Travel (H)	Weight
With vibrating switch			
1280	2780	1500	139
1380	3380	2000	143
1480	3980	2500	163
1580	4580	3000	179

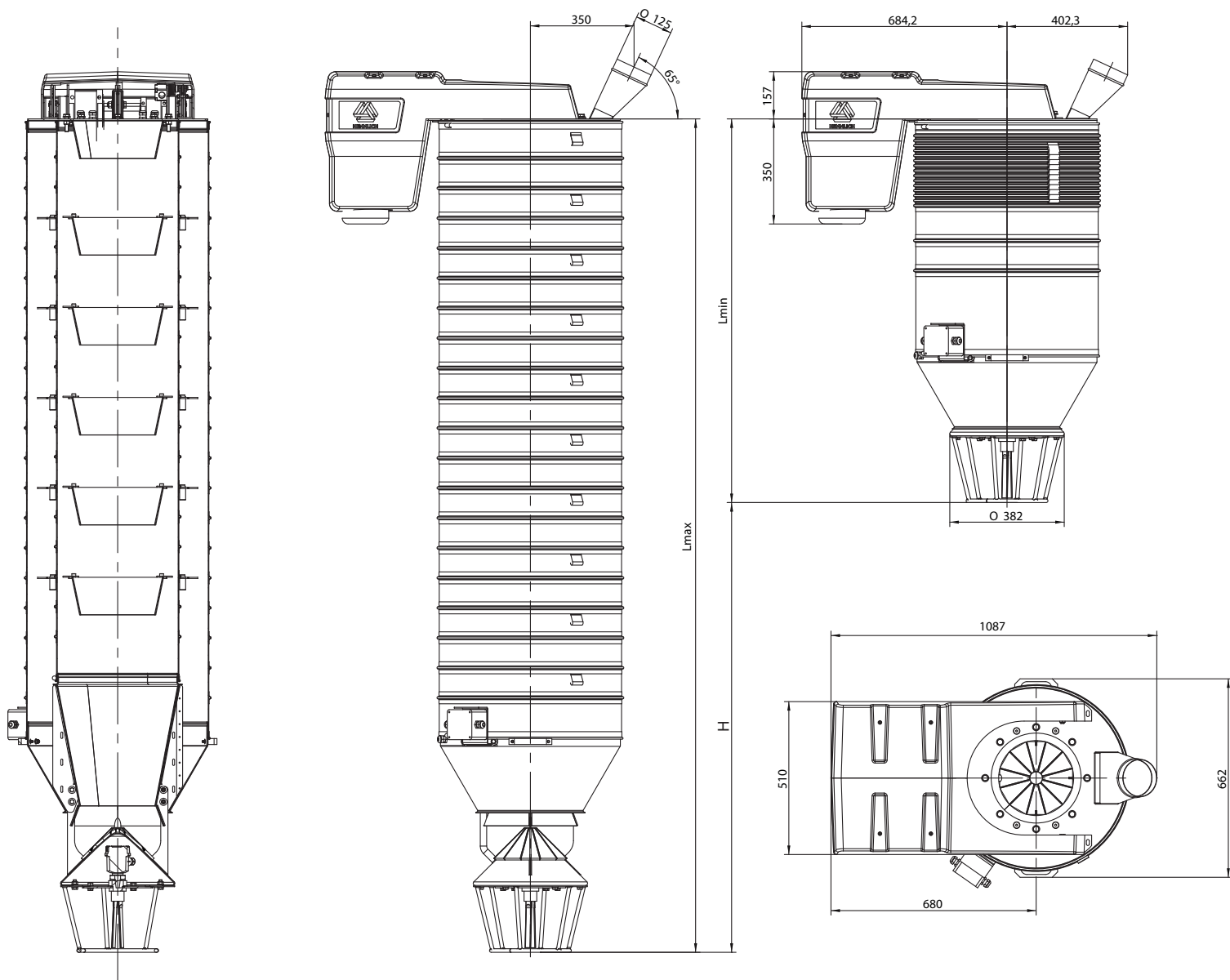


Telescopic loading spout type NZU300E with the integral closure cone and level indicator guarantees you a dustless loading of dry, dusty bulk solids into the tankers, railway vehicles or containers.

TANKER LOADING SPOUTS

1.1. ECONOMIC LINE

1.1.1. NZU300E



DESCRIPTION

telescopic loading spout for dust-free loading of dry, dusty bulk solids into tankers

OPERATION QUALITIES

- max. flow rate 250 m³/h
- particle size 0 - 40 mm
- inlet diameter DN300
- pipe Ø125 mm for connection to external filtration
- operating temperature -20 °C / +80 °C
- loading conduit consisting of internal cones and outer bellows

DESIGN

- hand winch for equipment operation
- no level switch
- sealing cone for perfect tanker sealing

ADDITIONAL ACCESSORIES

- design for ATEX / non-standard temperature (-40 °C / +250 °C)

L _{min} (retracted length)	L _{max} (extracted length)	Travel (H)	Weight
760	1 760	1 000	106
860	2 360	1 500	118
960	2 960	2 000	130
1 060	3 560	2 500	142

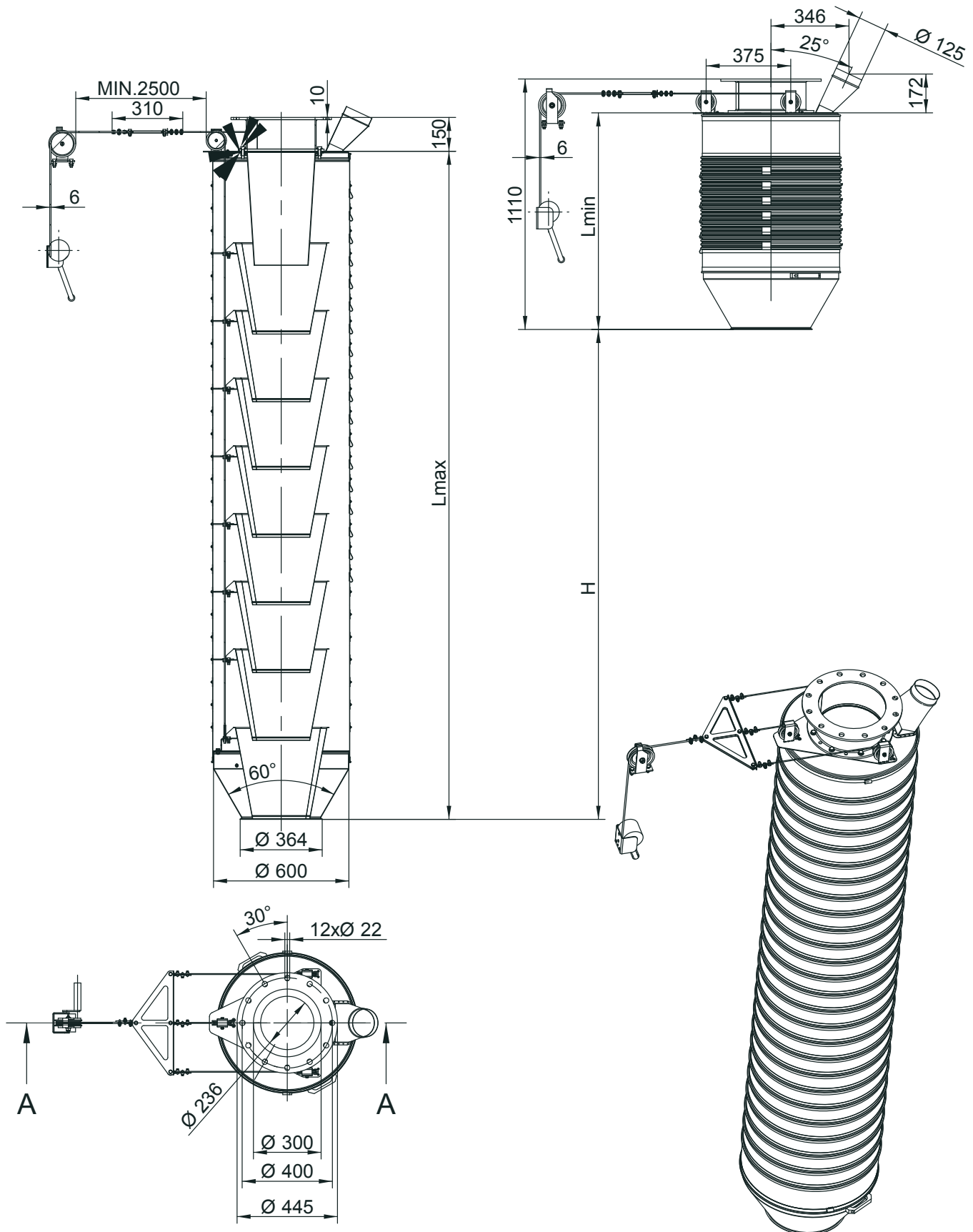


Telescopic loading spout type NZU300VR for dustless loading of dry, dusty bulk solids into the tankers, railway vehicles or containers is a simple equipment at the most competitive price.

TANKER LOADING SPOUTS

1.1. ECONOMIC LINE

1.1.2. NZU300VR



DESCRIPTION

telescopic loading spout for dust-free loading of dry, dusty bulk solids into tankers with built-in filter

OPERATION QUALITIES

- max. flow rate 250 m³/h
- particle size 0-40 mm
- inlet diameter DN300
- operating temperature -20 °C / +80 °C
- motor drive 0.55 kW
- built-in filter: flow rate 900 m³/h, fan 1.5 kW, filter area 17.5 m², residual concentration at the output < 10 mg/m³
- internal thread G ½"
- loading conduit consisting of internal cones and double bellows

DESIGN

- electric winch with limit switches for highest and lowest position, emergency sensors for highest and lowest positions
- terminal box for cable connection
- level switch – rotary / vibrating / capacitance type
- bottom closing cone to prevent any spillage of dust as the loading spout is being raised

ADDITIONAL ACCESSORIES

- electric control box
- pendant or remote control
- vibration unit
- shut off valves (manual, electro, pneumatic)
- design for ATEX / non-standard temperature (-40 °C / +250 °C)

L _{min} (retracted length)	L _{max} (extracted length)	Travel (H)	Weight
With rotary / capacitance switch			
1500	3000	1500	293
1500	3500	2000	305
1570	4070	2500	315

L _{min} (retracted length)	L _{max} (extracted length)	Travel (H)	Weight
With vibrating switch			
1580	3080	1500	285
1580	3580	2000	308
1650	4150	2500	317



0 - 40



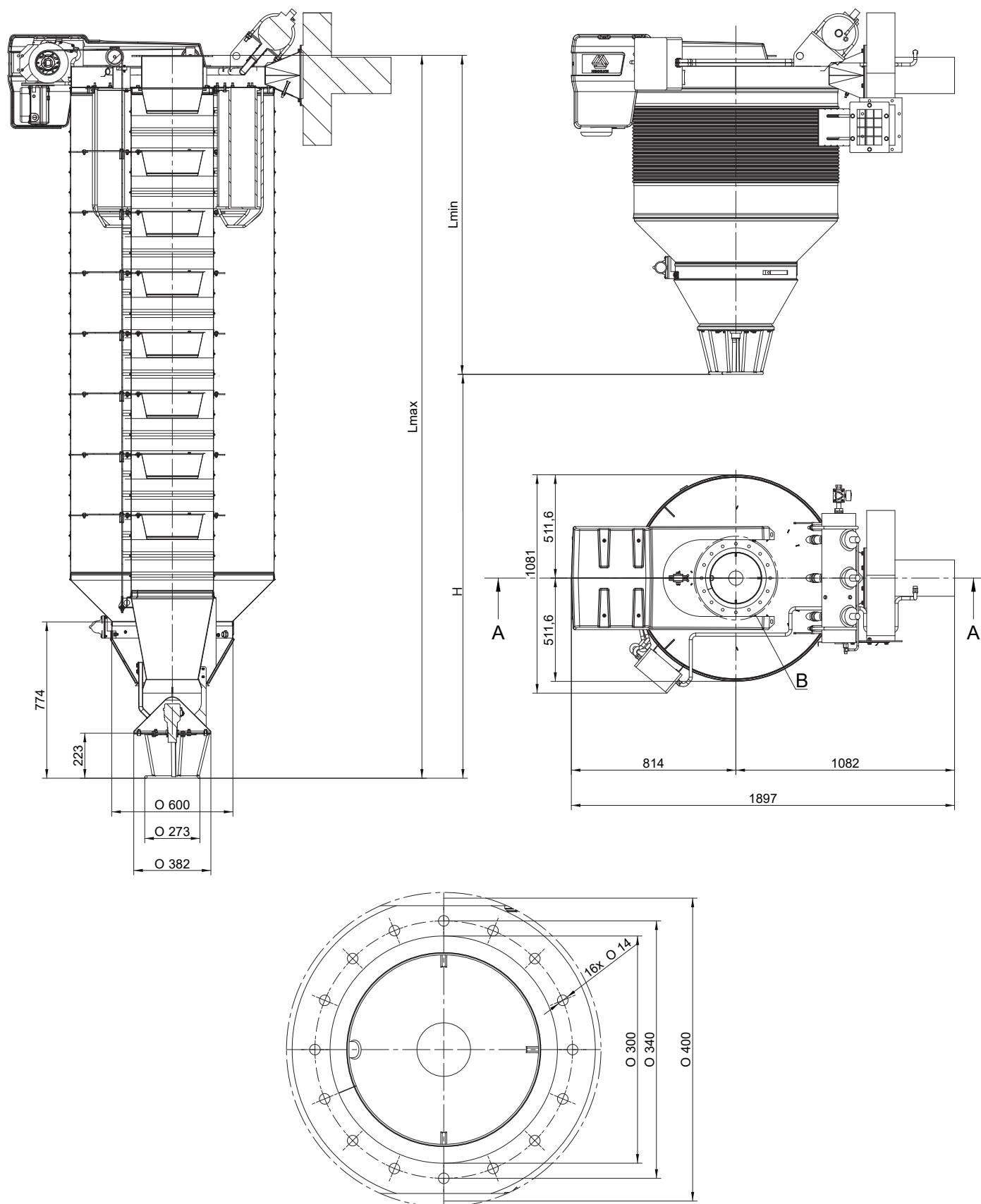
max. 250 m³/h

Telescopic loading spout type NZUF300E with the powerful built-in filter, integral closure cone and level indicator guarantees you a dustless loading of dry, dusty bulk solids into the tankers, railway vehicles or containers.

TANKER LOADING SPOUTS

1.1. ECONOMIC LINE

1.1.3. NZUF300E



DESCRIPTION

telescopic loading spout for dust-free loading of dry, dusty bulk solids into tankers

OPERATION QUALITIES

- max. flow rate 300 m³/h
- particle size 0 - 40 mm
- inlet diameter DN300
- pipe Ø250 mm for connection to external filtration
- operating temperature -20 °C / +80 °C
- motor drive 0.9 kW
- loading conduit consisting of internal cones and outer bellows

DESIGN

- electric winch with limit switches for highest and lowest position, emergency sensors for highest and lowest positions
- terminal box for cable connection
- level switch – rotary / vibrating
- rubber-coated sealing cone for perfect tanker sealing
- bottom closing cone to prevent any spillage of dust as the loading spout is being raised
- available with the external dust collector and double bellows

ADDITIONAL ACCESSORIES

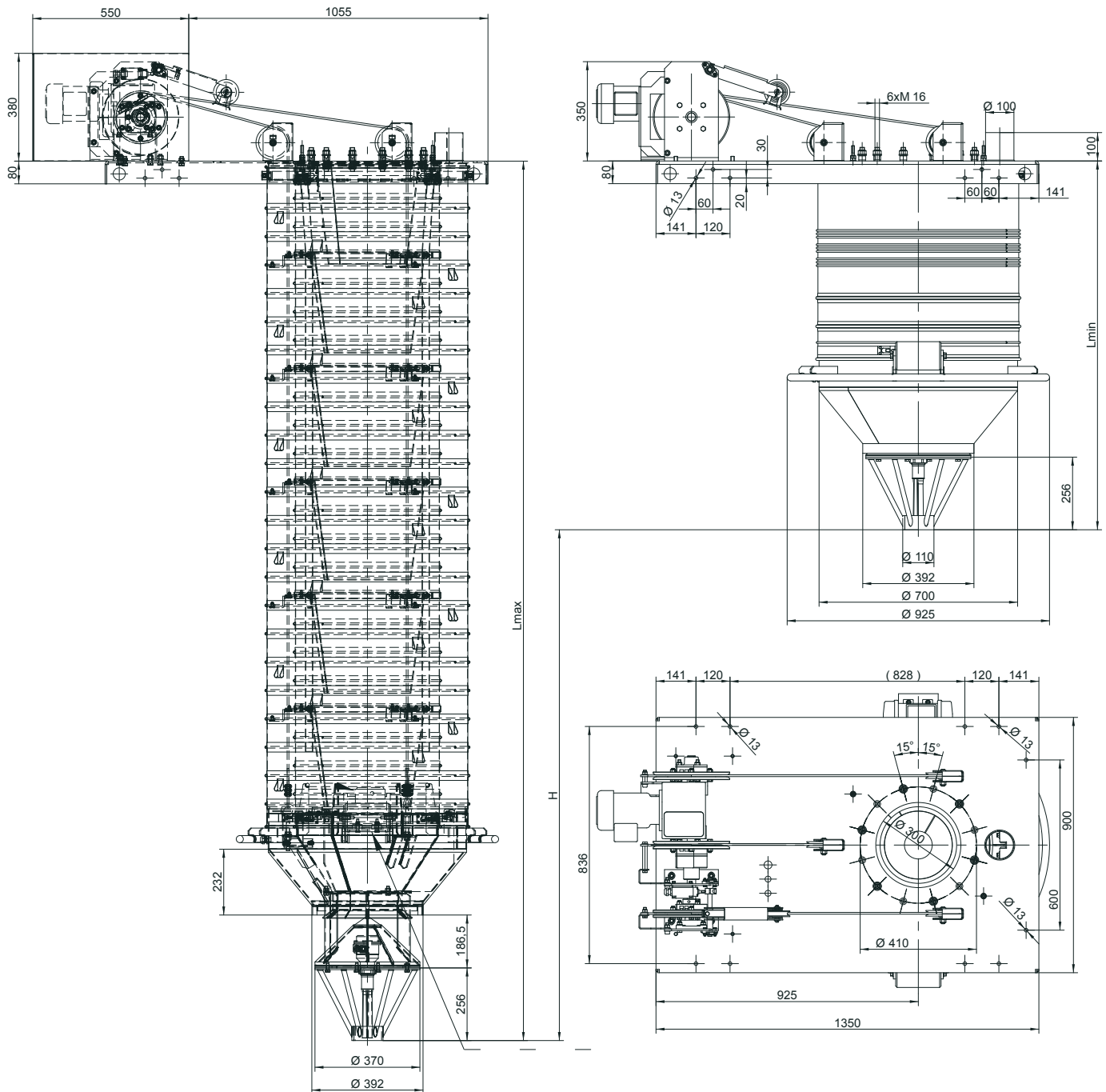
- electric control box
- pendant or remote control
- vibration unit
- shut off valves (manual, electro, pneumatic)
- design for ATEX / non-standard temperature (-40 °C / +250 °C)

L _{min} (retracted length)	L _{max} (extracted length)	Travel (H)	Weight
With rotary switch			
1 390	2 890	1 500	349
1 590	4 090	2 500	405

L _{min} (retracted length)	L _{max} (extracted length)	Travel (H)	Weight
With vibrating switch			
1 500	3 000	1 500	364
1 700	4 200	2 500	433



Robust-design telescopic loading spout type NZU300S with the integral closure cone and level indicator guarantees you a dustless loading of dry, dusty bulk solids into the tankers, railway vehicles or containers.



DESCRIPTION

telescopic loading spout with spreader for efficient loading of dry, dusty bulk solids into tankers

OPERATION QUALITIES

- max. flow rate 80 m³/h
- particle size max. 10 mm
- inlet diameter DN300
- operating temperature -20 °C / +80 °C
- gearbox motor drive 0.9 kW
- spreader motor 3 or 7.5 kW
- loading conduit consisting of outer bellows

DESIGN

- electric winch with limit switches for highest and lowest position, emergency sensors for highest and lowest positions
- terminal box for cable connection
- level switch – rotary / capacitance type
- rubber-coated sealing cone for perfect tanker sealing
- **bottom part is equipped with powerful spreader that spreads the product into tanker**

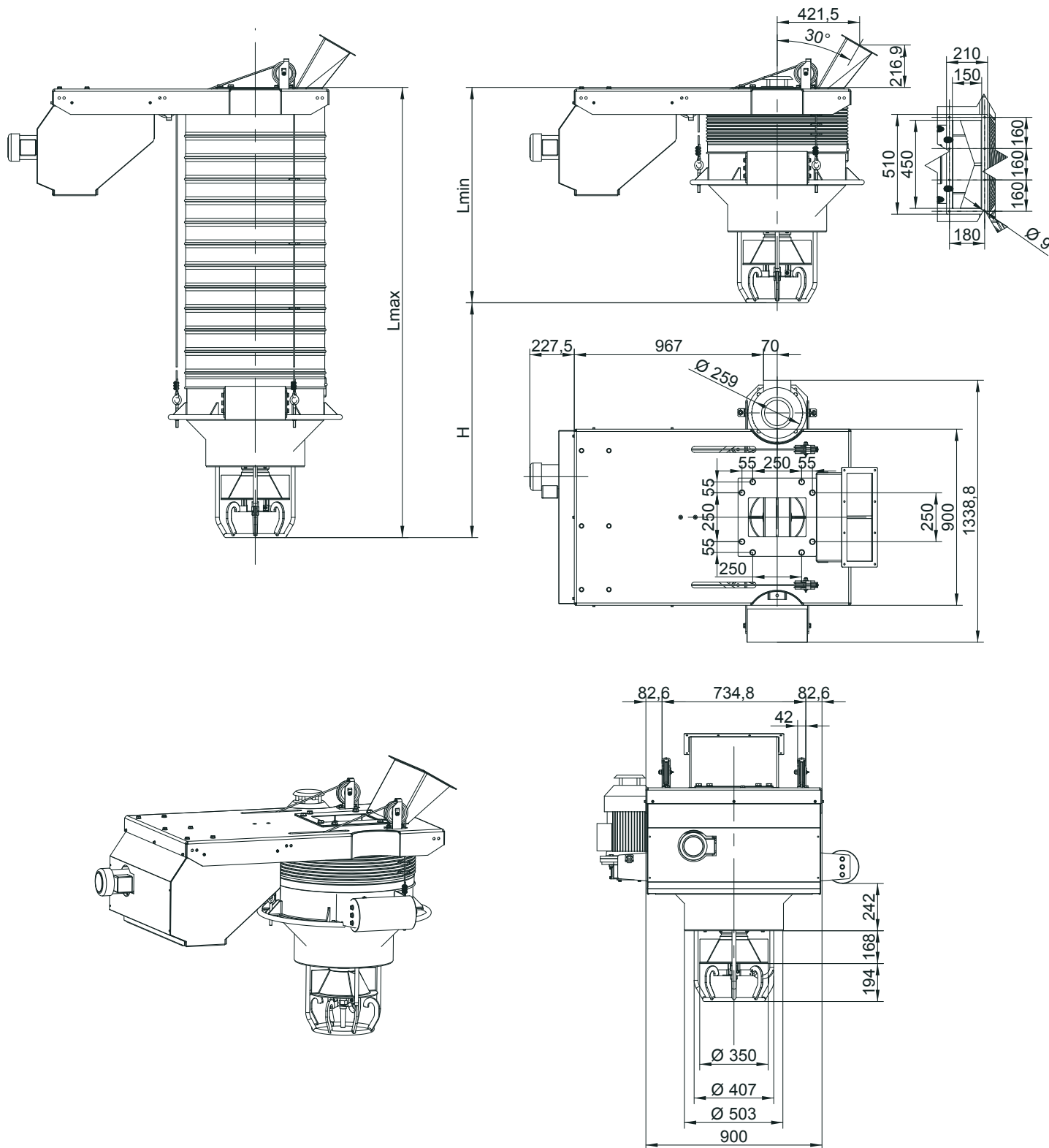
ADDITIONAL ACCESSORIES

- electric control box
- pendant or remote control
- vibration unit
- shut off valves (manual, electro, pneumatic)
- design for ATEX / non-standard temperature (-40 °C / +250 °C)

L _{min} (retracted length)	L _{max} (extracted length)	Travel (H)	Weight
1 100	2 300	1 200	472
1 628	2 938	1 310	493



This unique telescopic loading spout type NZU300R with the powerful spreader **guarantees you to load up to 25% more** product in comparison with the gravity loading.



1.3. TANKER POSITIONER**DESCRIPTION**

- unique positioner for flexible positioning of the tanker loading spout above the tanker opening
- ideal when the transport vehicle is not to be moved during the loading

OPERATION QUALITIES

- designed only for positioning in longitudinal axis (X-axis)
- travel path 2 meters (1 meter in each direction)
- loading spout is positioned above the vehicle opening by being moved to the left or to the right
- suitable for the tanker loading spout without dust collector and also with built-in dust collector
- eliminates vehicle re-spotting once in the loading area

DESIGN

It consists of flexible pipe (2365 mm long) and trolley (carbon steel). Inlet pipe DN300 is connected to the customer hopper.

Two covering bellows are included:

Upper bellows DN360 (material Polymar) seals the space between the pipe upper part and the inlet part.

Lower bellows DN408 (material Polymar) seals the space between the pipe bottom part and the trolley.

TROLLEY IS DRIVEN BY THE ELECTRIC GEARBOX:

TYPE: MRT20-FTR

POWER: 1,5 KW, 3.45 A

TROLLEY DIMENSIONS:

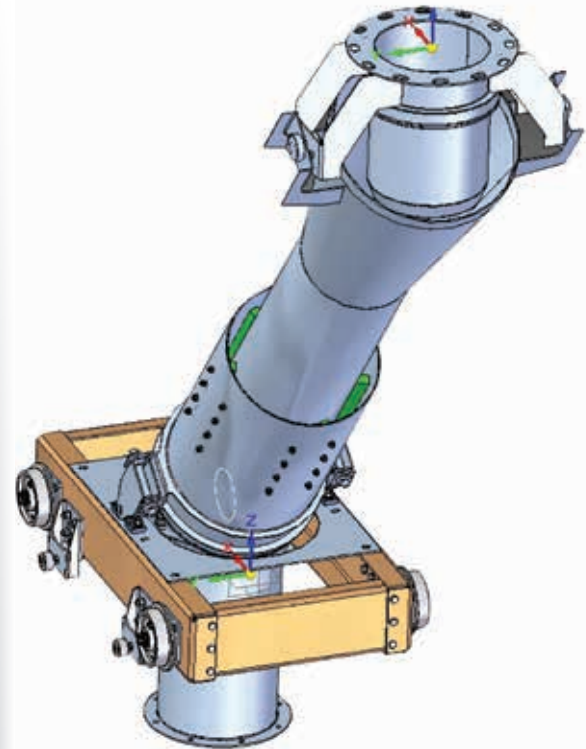
LENGTH: 1250 mm

WIDTH: 710 mm

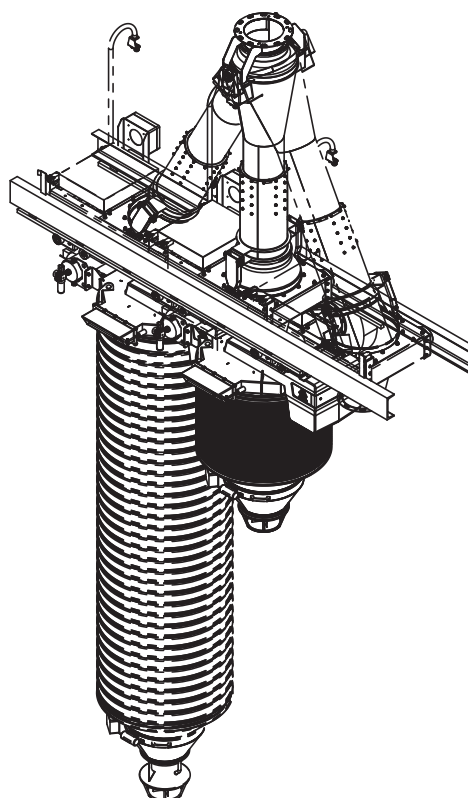
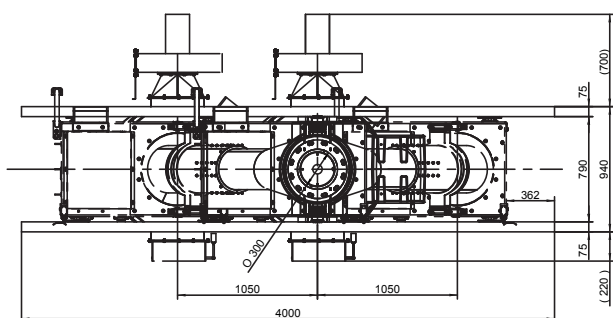
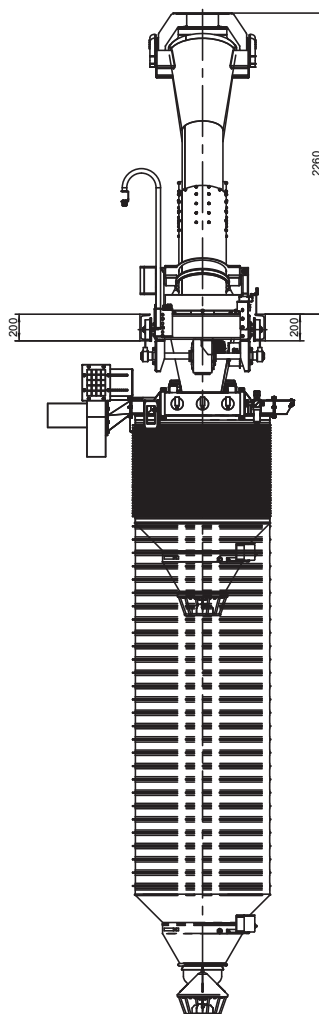
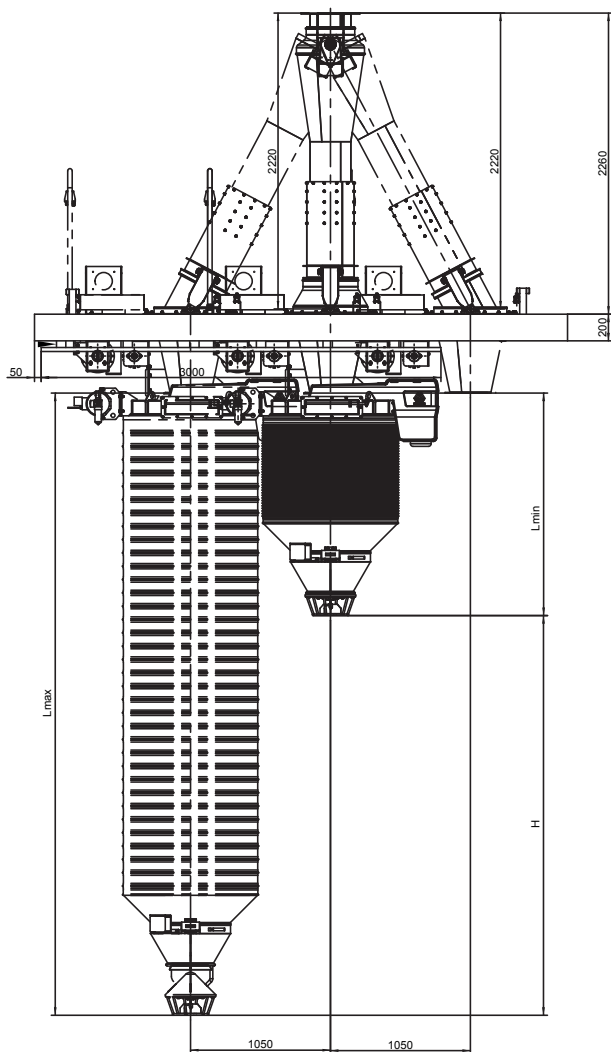
BOTTOM PART INLET: 380 mm

TWO LIMIT SWITCHES TO CONTROL THE TROLLEY MOVEMENT:

TYPE: PIZZATO, FD-531



1.3. TANKER POSITIONER



1.3. TANKER POSITIONER

1.3.1. HOPPER POSITIONER

DESCRIPTION

- unique positioner for the flexible positioning of the loading spout above the vehicle
- loading spout is positioned above the vehicle opening by being moved to the left or to the right
- ideal when the transport vehicle is not to be moved during the loading
- designed only for positioning in longitudinal axis (X-axis)

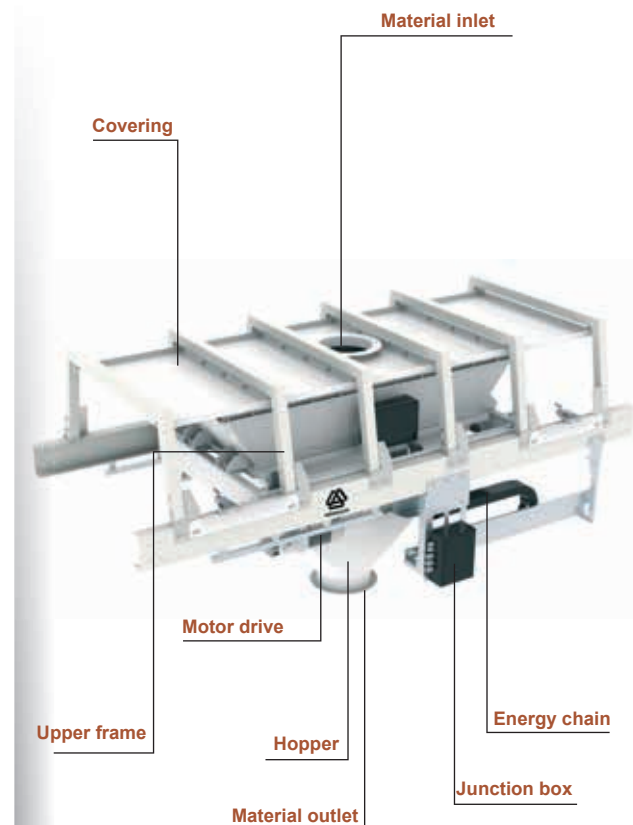
TECHNICAL FEATURES

- inlet diameter DN 300
- trailer moving on 4 wheels
- mild steel as a standard design, stainless steel AISI 304/316 on request
- hopper with 60° discharge angle
- electric motor to drive the hopper – 0.55 kW, 3 x 400 V AC, 50 Hz (other voltage on request)
- 2 pcs of limit switches (factory preset) for the travel control
- standard operating temperature -20/+40 °C
- maximum positioning travel up to 1000 mm from the centre point

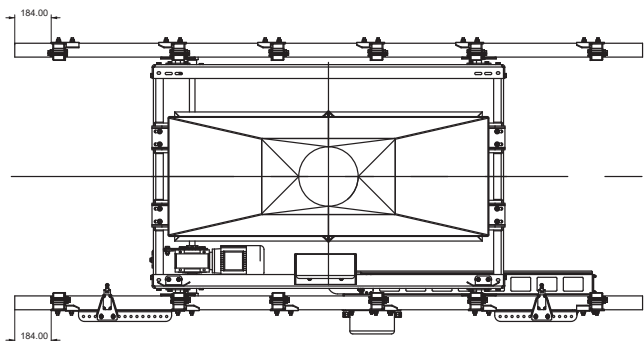
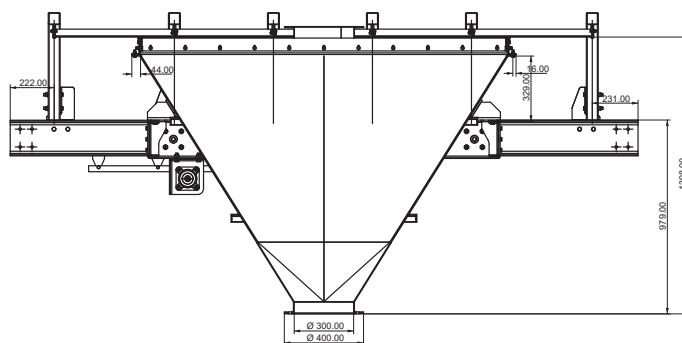
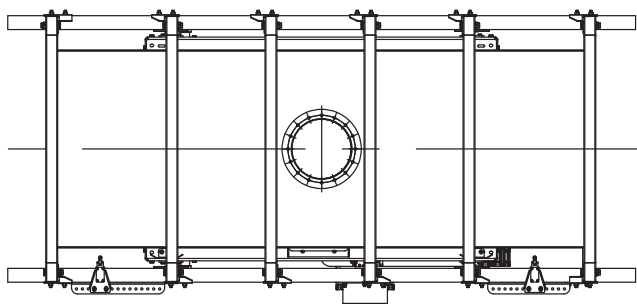
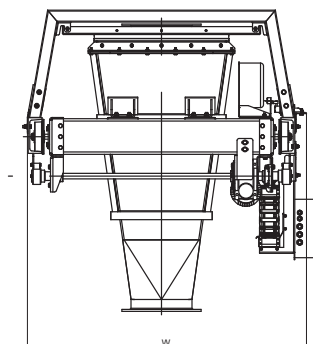
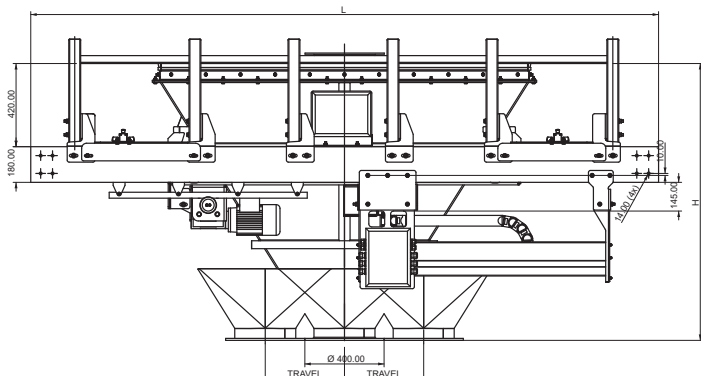
BENEFITS

- solid covering which avoids the dust will fall on the hopper and the spout
- eliminates vehicle re-spotting once in the loading area
- suitable for the loading spout with and without the built-in dust collector
- factory pre-wired

Overall dimensions					
Hopper type	T (Travel)	L (length)	W (width)	H (high)	Weight (kg)
NZ-300/400	400 mm	3170 mm	1409 mm	1398 mm	704



1.3. TANKER POSITIONER 1.3.1. HOPPER POSITIONER



DESCRIPTION

telescopic loading spout for dust-free loading of dry, dusty bulk solids on trucks and railcars

OPERATION QUALITIES

- max. flow rate 250 m³/h
- particle size 0-80 mm
- inlet diameter DN300
- pipe Ø125 mm for connection to external filtration
- operating temperature -20 °C / +80 °C
- motor drive 0.55 kW
- loading conduit consisting of internal cones and outer bellows

DESIGN

- electric winch with limit switches for highest and lowest position, emergency sensors for highest and lowest positions
- terminal box for cable connection
- level switch – rotary / vibrating
- dustproof bell with rubber skirt at the lower end of the loading spout
- available also with manual winch

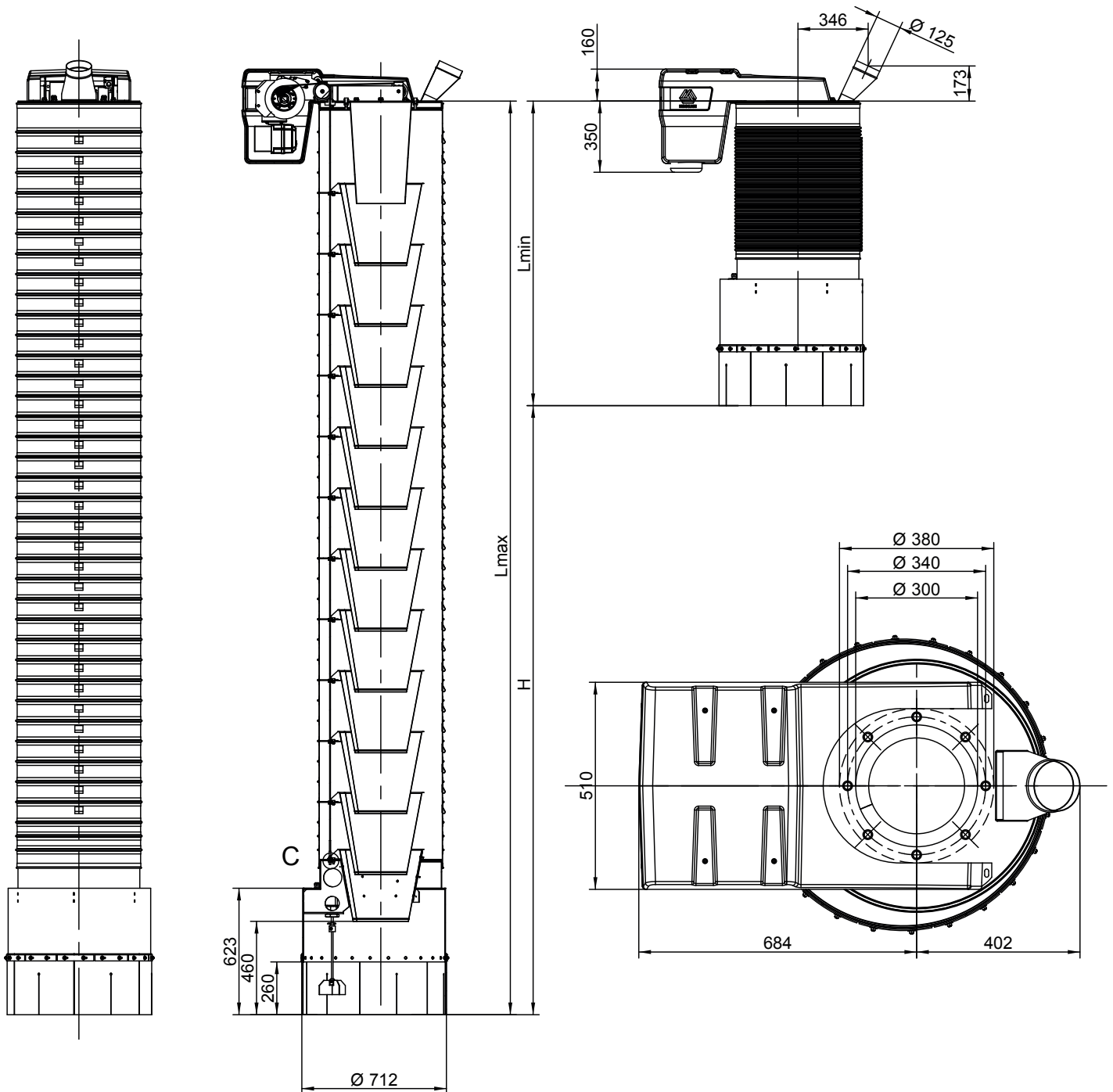
ADDITIONAL ACCESSORIES

- electric control box
- pendant or remote control
- vibration unit
- shut off valves (manual, electro, pneumatic)
- design for ATEX / non-standard temperature (-40 °C/+250 °C)

L _{min} (retracted length)	L _{max} (extracted length)	Travel (H)	Weight
1 300	3 300	2 000	145
1 400	3 900	2 500	156
1 500	4 500	3 000	167
1600	5100	3500	195
1 700	5 700	4 000	189
1 800	6 300	4 500	229
1 900	6 500	4 600	238
2 100	7 000	4 900	307



Telescopic loading spout type NZO300E with the dustproof bell, rubber skirt and level indicator guarantees you a dustless loading of dry, dusty bulk solids on open trucks and railway cars.



DESCRIPTION

telescopic loading spout for dust-free loading of dry, dusty bulk solids on trucks and railcars

OPERATION QUALITIES

- max. flow rate 250 m³/h
- particle size 0-80 mm
- inlet diameter DN300
- operating temperature -20 °C / +80 °C
- motor drive 0.55 kW
- built-in filter: flow rate 900 m³/h, fan 1.5 kW, filter area 17.5 m², residual concentration at the output < 10 mg/m³
- internal thread G ½"
- loading conduit consisting of internal cones and double bellows

DESIGN

- electric winch with limit switches for highest and lowest position, emergency sensors for highest and lowest positions
- terminal box for cable connection
- level switch – rotary / vibrating
- dustproof bell with rubber skirt at the lower end of the loading spout

ADDITIONAL ACCESSORIES

- electric control box
- pendant or remote control
- vibration unit
- shut off valves (manual, electro, pneumatic)
- design for ATEX / non-standard temperature (-40 °C/+250 °C)

L _{min} (retracted lenght)	L _{max} (extracted lenght)	Travel (H)	Weight
1 850	3 850	2 000	330
1 800	4 450	2 650	345
2 050	5 050	3 000	356

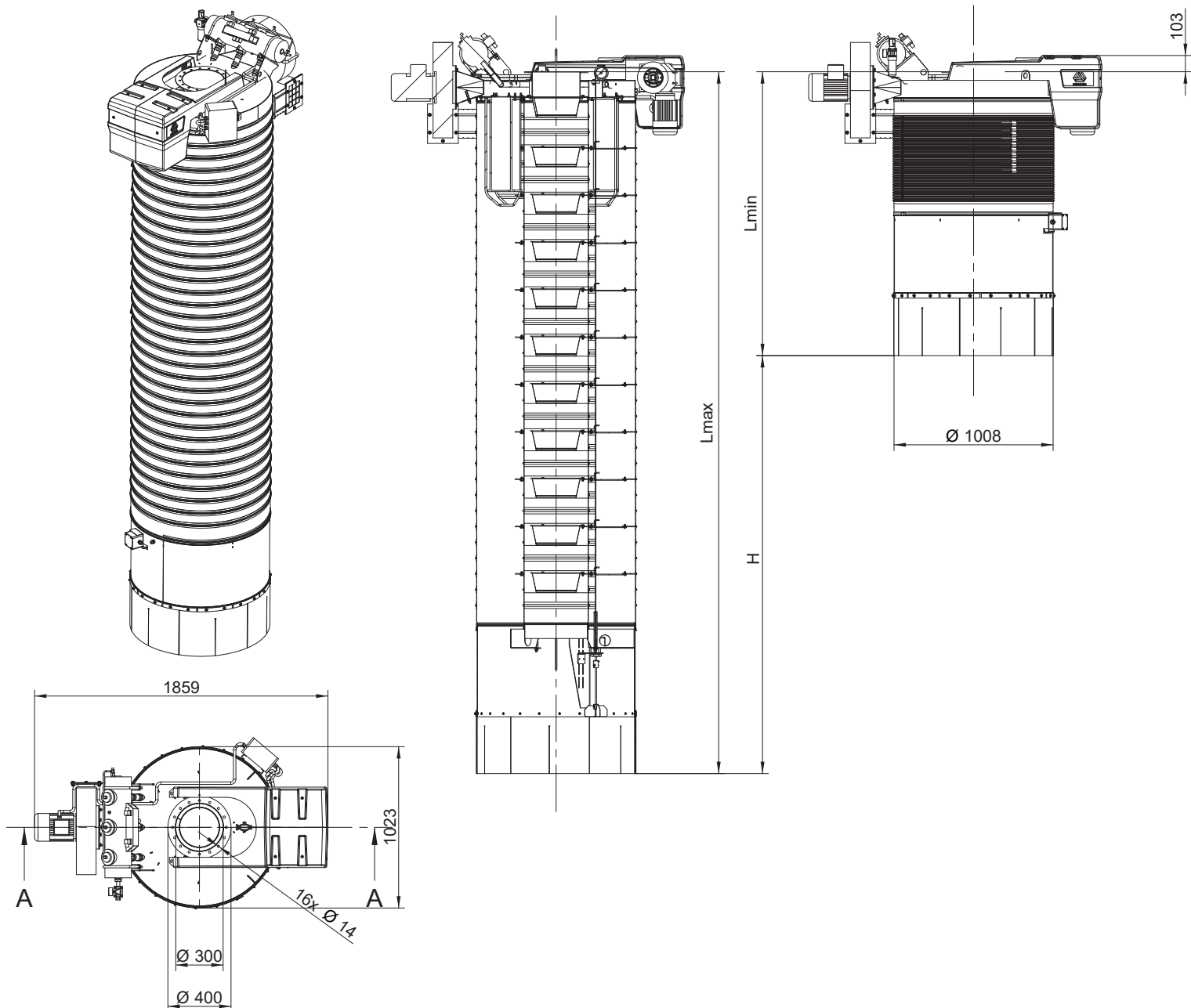


0 - 80



max. 250 m³/h

Telescopic loading spout type NZOF300E with the powerful built-in filter, dustproof bell with rubber skirt and level indicator guarantees you a dustless loading of dry, dusty bulk solids on trucks or railway cars.



POPIS

- telescopic loading spout for dust-free loading of dry, dusty bulk solids on trucks and railcars

OPERATION QUALITIES

- max. flow rate 400 m³/h
- particle size 0-80 mm
- inlet diameter DN400
- operating temperature -20 °C / +80 °C
- motor drive 1.5 kW
- loading conduit consisting of internal telescopic tubes and outer bellows
- built-in filter, flow rate 1800 m³/h, fan 2.2 kW, filter area 17.5 m², residual concentration at the output < 10 mg/m³, compressed air min. 5 bar, internal thread G ½"

DESIGN

- electric winch with limit switches for highest and lowest position, emergency sensors for highest and lowest positions
- terminal box for cable connection
- level switch – rotary / vibrating
- dustproof bell with rubber skirt at the lower end of the loading spout

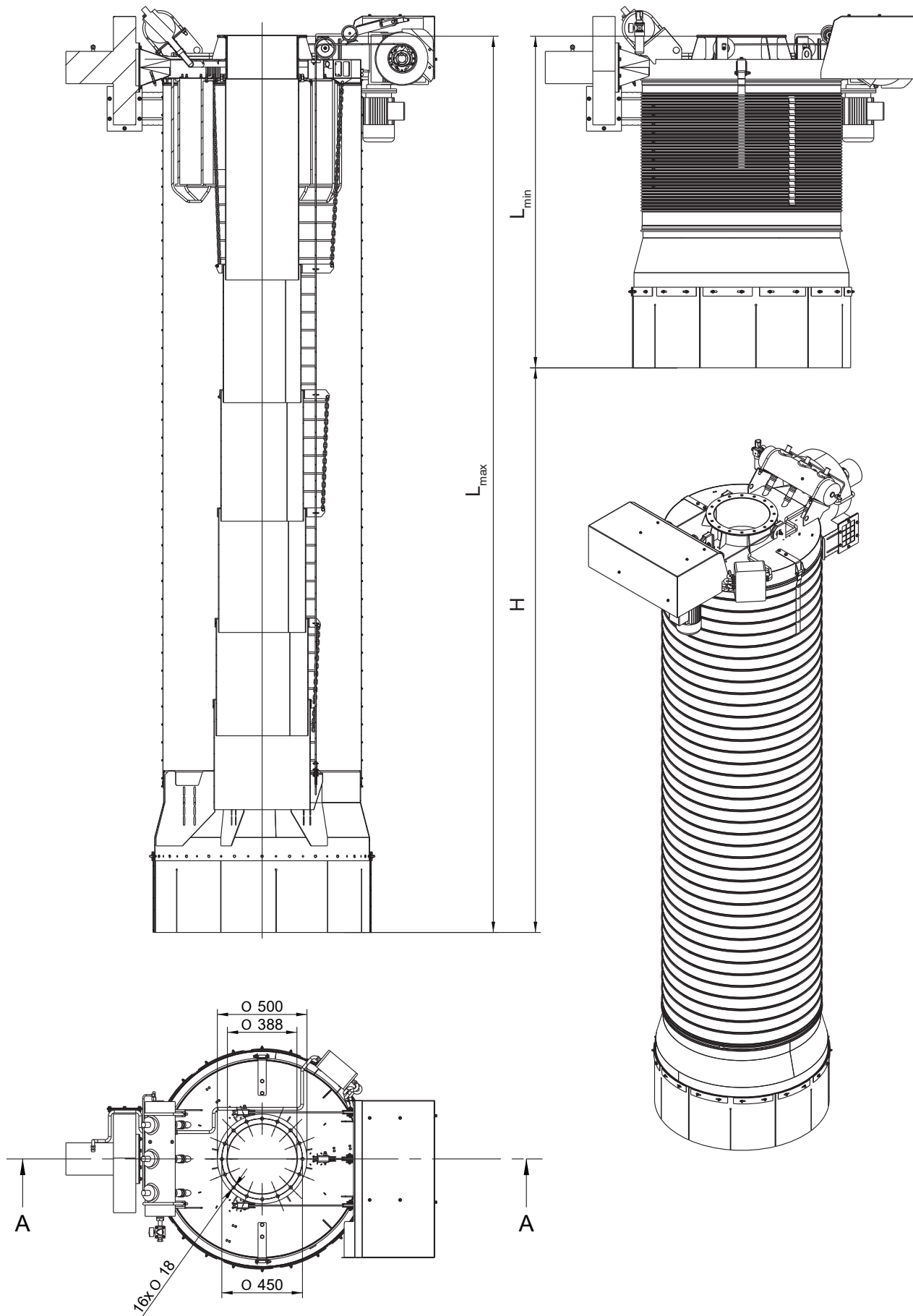
ADDITIONAL ACCESSORIES

- electric control box
- pendant or remote control
- vibration unit
- shut off valves (manual, electro, pneumatic)
- design for ATEX
- non-standard temperature (-40 °C / +250 °C)

L _{min} (retracted length)	L _{max} (extracted length)	Travel (H)	Weight
1850	5000	3150	694
2050	5650	3600	731
2200	6300	4100	733



Telescopic loading spout type NZOF400E with the powerful built-in filter, dustproof bell with rubber skirt and level indicator guarantee you a dustless loading of dry, dusty bulk solids on trucks or railway cars.



DESCRIPTION

telescopic loading spout for dust-free loading of dry, dusty bulk solids on trucks and railcars

OPERATION QUALITIES

- inlet diameter DN400
- max. flow rate 400 m³/h
- particle size 0-100 mm
- pipe for connection to external filtration
- operating temperature -20 °C / +80 °C
- motor drive 0.9 kW
- loading conduit consisting of internal telescopic tubes and outer bellows

DESIGN

- electric winch with limit switches for highest and lowest position, emergency sensors for highest and lowest positions
- terminal box for cable connection
- level switch – rotary / vibrating
- dustproof bell with rubber skirt at the lower end of the loading spout

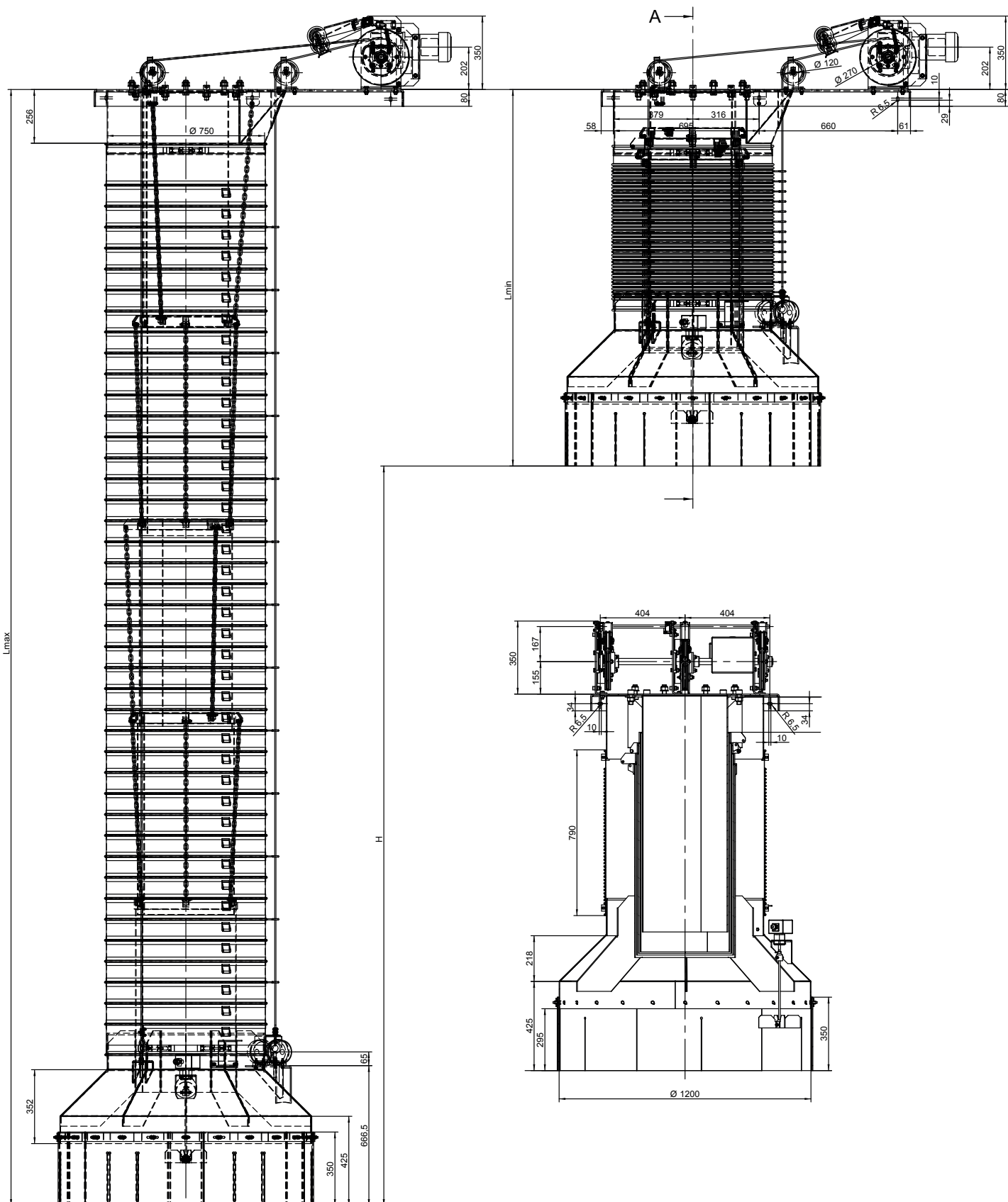
ADDITIONAL ACCESSORIES

- electric control box
- pendant or remote control
- vibration unit
- shut off valves (manual, electro, pneumatic)
- design for ATEX / non-standard temperature (-40 °C/+250 °C)

L _{min} (retracted length)	L _{max} (extracted length)	Travel (H)	Weight
1 250	3 500	2 250	489
1 400	3 900	2 500	531
1 700	4 500	3 000	484
1 800	5 320	3 520	529
2 150	6 350	4 200	628



Robust-design telescopic loading spout type NZO400S with the dustproof bell, rubber skirt and level indicator guarantees you a dustless loading of dry, dusty bulk solids on trucks or railway cars.



DESCRIPTION

telescopic loading spout for dust-free loading of dry, dusty bulk solids on trucks and railcars

OPERATION QUALITIES

- max. loading rate 450-500 m³/h
- particle size 0-80 mm
- inlet diameter DN 500
- operating temperature -20 °C / +80 °C
- motor drive 1 kW
- loading conduit consisting of internal telescopic tubes and outer bellows

DESIGN

- electric winch with limit switches for highest and lowest position, emergency sensors for highest and lowest positions
- terminal box for cable connection
- level switch – rotary / vibrating
- dustproof bell with rubber skirt at the lower end of the loading spout

ADDITIONAL ACCESSORIES

- electric control box
- pendant or remote control
- vibration unit
- design for ATEX
- non-standard temperature (-40 °C/+250 °C)

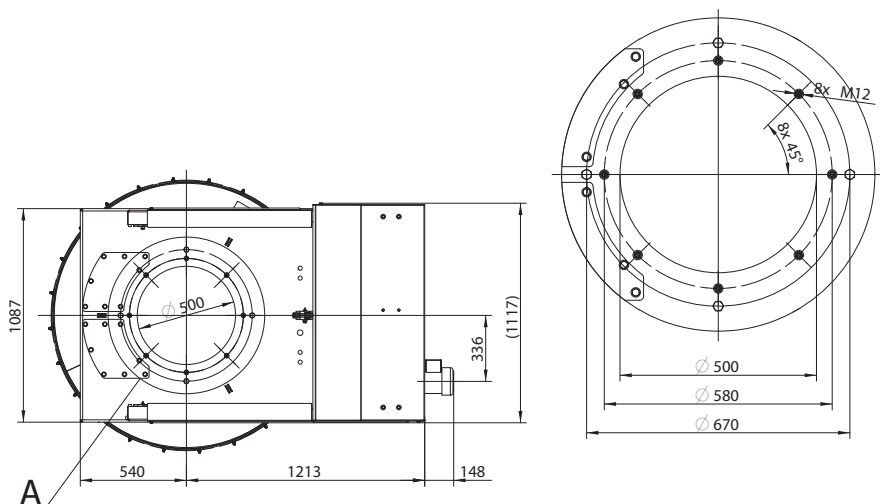
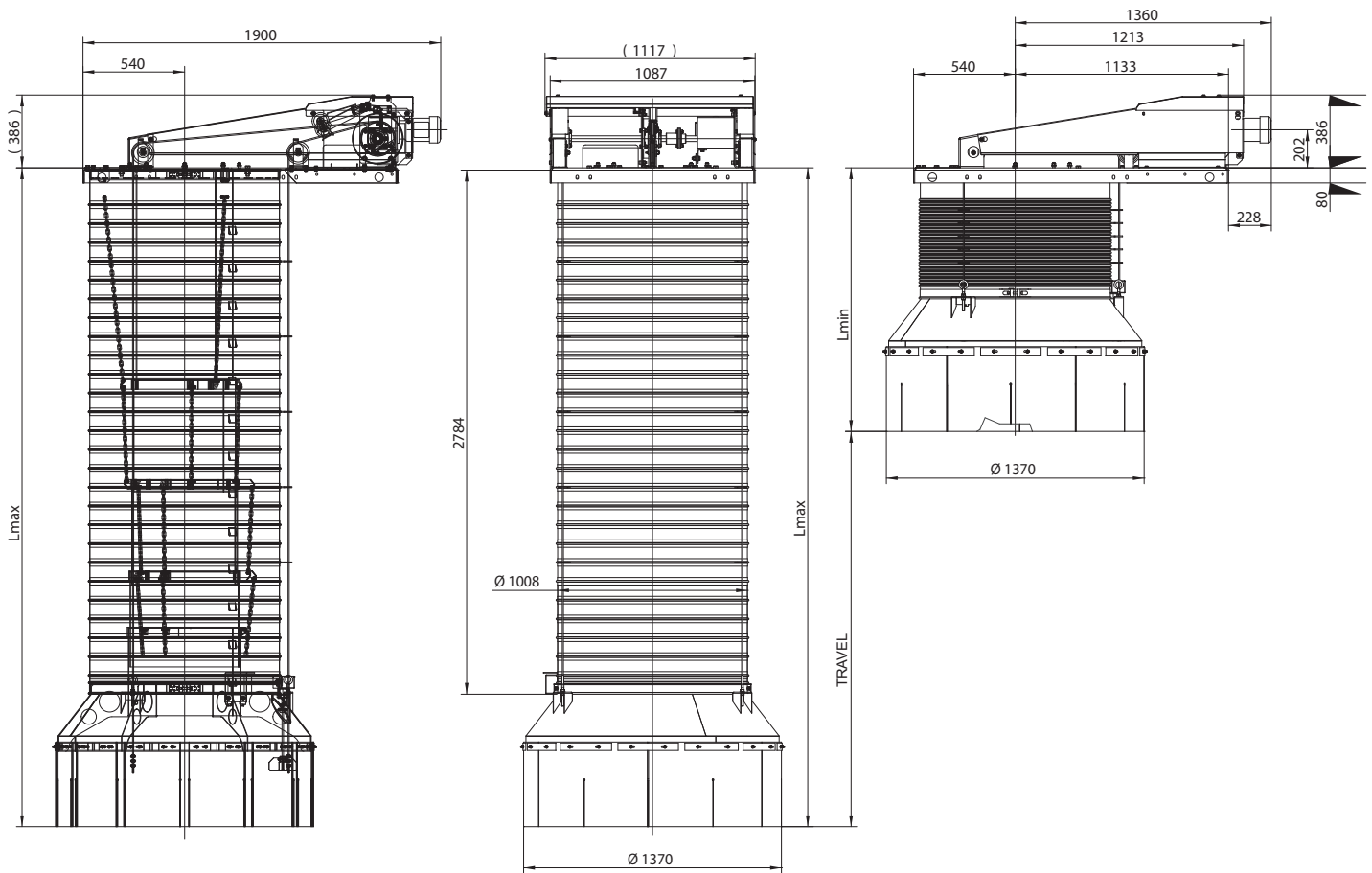
L _{min} (retracted length)	L _{max} (extracted length)	Travel (H)	Weight
1400	3500	2100	565
1460	4000	2540	590
1600	4500	2900	620
1635	5160	3525	666
1775	5750	3975	692
1830	6200	4370	730



Telescopic loading spout type NZO500S with the dustproof bell, rubber skirt and level indicator guarantee you a dustless loading of dry, dusty bulk solids on trucks or railway cars.

2.2. STANDARD LINE

2.2.2. NZO500S



DESCRIPTION

telescopic loading spout for loading of sticky bulk solids (gypsum, ash) on trucks and railcars

OPERATION QUALITIES

- inlet diameter DN 1000
- typical flow rate 100-200 t/h
- particle size 0-50 mm
- operating temperature -20 °C / +80 °C
- motor drive 0.37 kW
- loading conduit consisting of long inlet tube (carbon steel lined PE UHMW) and outer bellows (diameter 1000 mm)

DESIGN

- electric winch with limit switches for highest and lowest position, emergency sensors for highest and lowest positions
- terminal box for cable connection
- level switch – 1 x rotary type
- dustproof bell with rubber skirt at the lower end of the loading spout

ADDITIONAL ACCESSORIES

- electric control box
- pendant or remote control
- vibration unit

L_{min} (retracted length)	L_{max} (extracted length)	Travel (H)	Weight
1400	3850	2450	553
1450	4150	2700	556
1750	5050	3300	573
1850	5676	3826	578

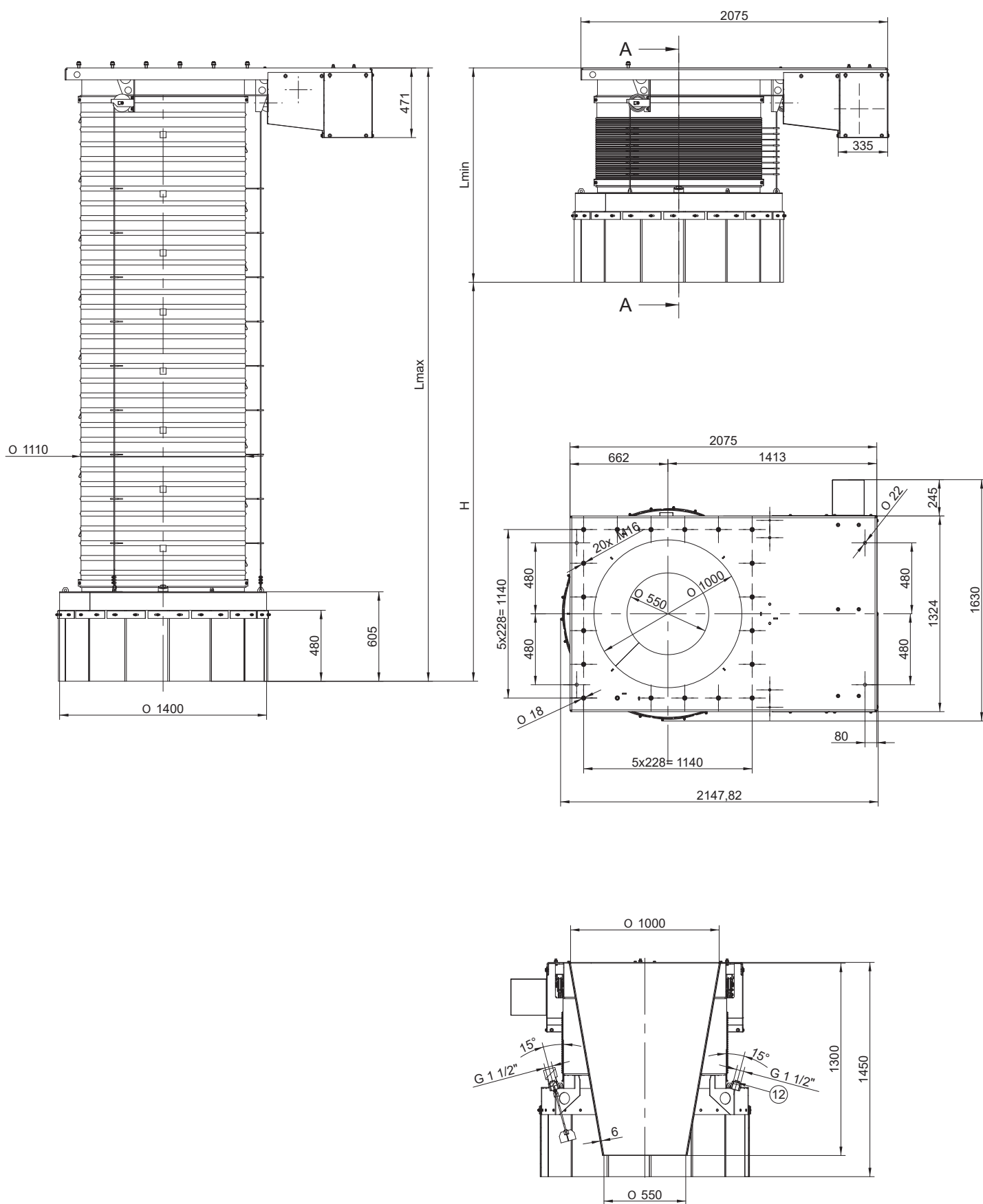


0 - 5



max. 200 m³/h

Robust-design telescopic loading spout type NZO1000S with the dustproof bell, rubber skirt and level indicator guarantee you a safe loading of sticky bulk solids on trucks or railway cars.



DESCRIPTION

telescopic loading spout for dust-free loading of dry, dusty bulk solids on trucks and railcars

OPERATION QUALITIES

- max. flow rate 500 m³/h
- particle size 0-100 mm
- inlet diameter DN600
- pipe for connection to external filtration
- operating temperature -20 °C / +80 °C
- motor drive 2.2 kW
- loading conduit consisting 1.5 / 2.2 kW of internal telescopic tubes and outer bellows

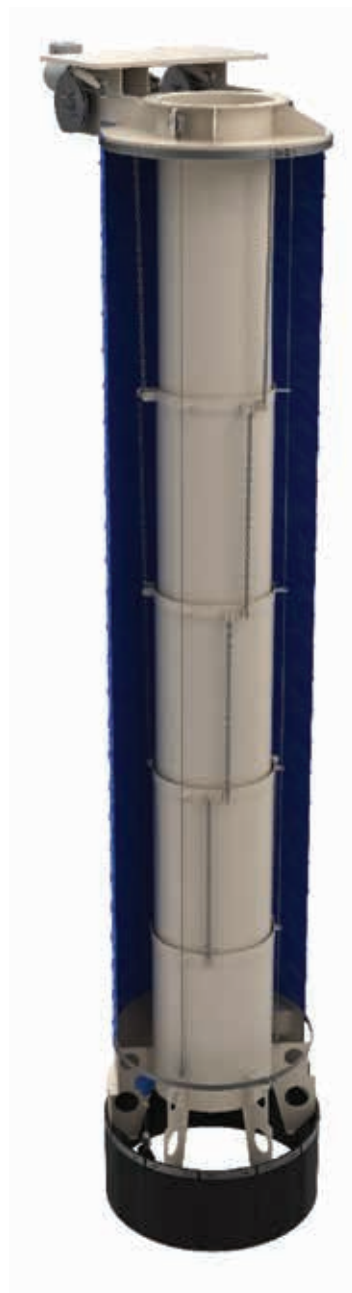
DESIGN

- electric winch with limit switches for highest and lowest position, emergency sensors for highest and lowest positions
- terminal box for cable connection
- level switch – 2x rotary
- dustproof bell with rubber skirt at the lower end of the loading spout

ADDITIONAL ACCESSORIES

- electric control box
- shut off valves (manual, electro, pneumatic)
- design for ATEX / non-standard temperature (-40 °C / +250 °C)

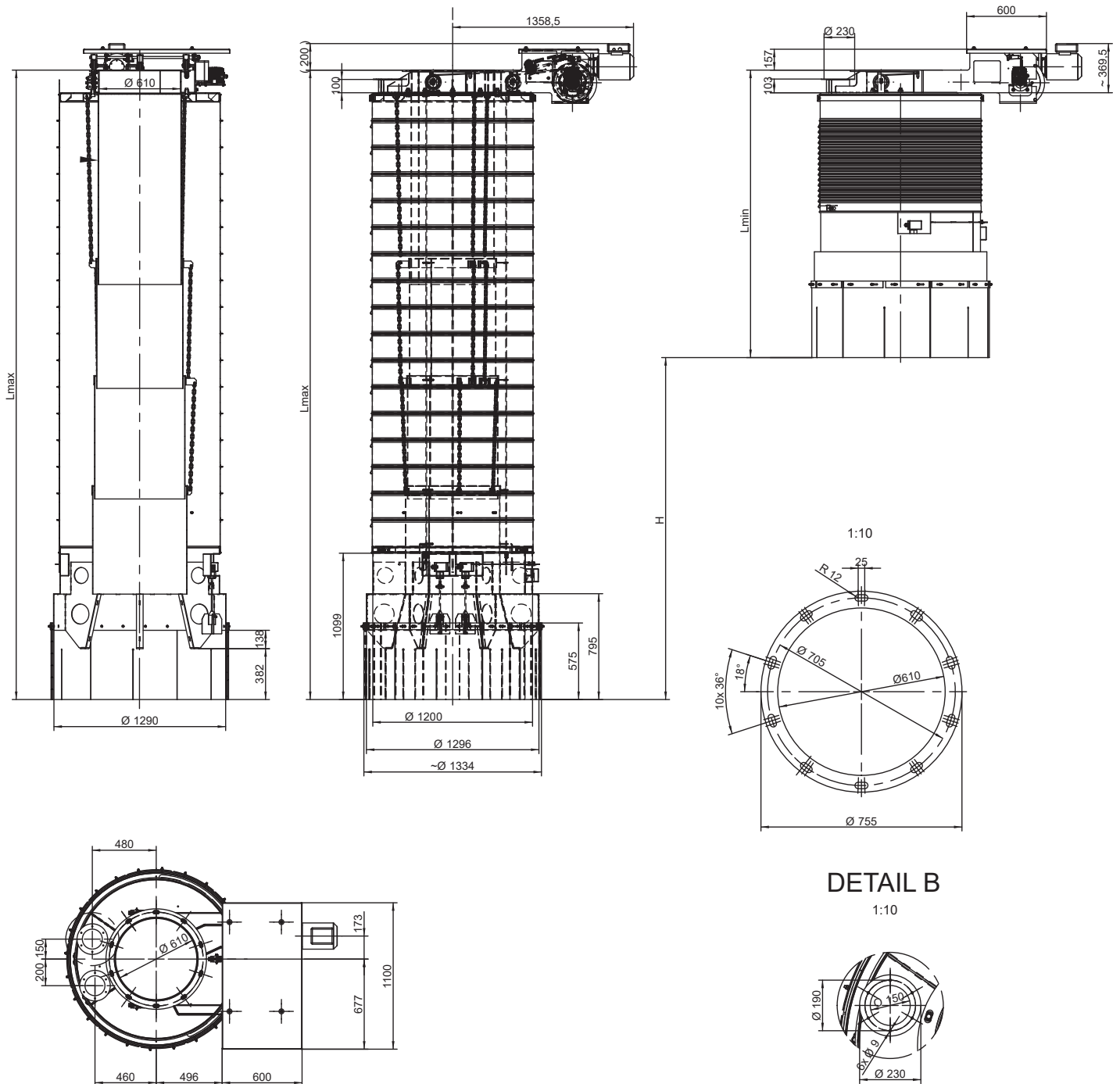
L _{min} (retracted length)	L _{max} (extracted length)	Travel (H)	Weight
1940	3635	1695	631
1900	4670	2770	949
2160	4729	2569	704
2160	5060	2900	798
2230	5151	2921	750
2490	6150	3660	823
2600	6700	4100	906
2650	7200	4550	1100
2700	7700	5000	1125
2800	8200	5400	1170



Robust-design telescopic loading spout type NZO600H with the dustproof bell, rubber skirt and level indicator guarantees you a dustless loading of dry, dusty bulk solids on trucks or railway cars.

2.3. HEAVY LINE

2.3.1. NZO600H



DESCRIPTION

telescopic loading spout for dust-free loading of abrasive, dusty bulk solids on trucks and railcars

OPERATION QUALITIES

- max. flow rate 1300 m³/h
- particle size 0-100 mm
- inlet diameter DN 800
- operating temperature -20 °C / +80 °C
- motor drive 2.2 kW
- loading conduit consisting of internal telescopic tubes and outer bellows

DESIGN

- electric winch with limit switches for highest and lowest position, emergency sensors for highest and lowest positions
- terminal box for cable connection
- level switch – 2 x rotary / 2 x vibrating
- dustproof bell with rubber skirt at the lower end of the loading spout

ADDITIONAL ACCESSORIES

- electric control box
- vibration unit
- design for ATEX
- non-standard temperature (-40 °C / +250 °C)

L _{min} (retracted length)	L _{max} (extracted length)	Travel (H)	Weight
2420	6000	3580	1825
2540	6700	4160	1885
2640	7200	4560	1940
2740	7800	5060	1990



0 - 100

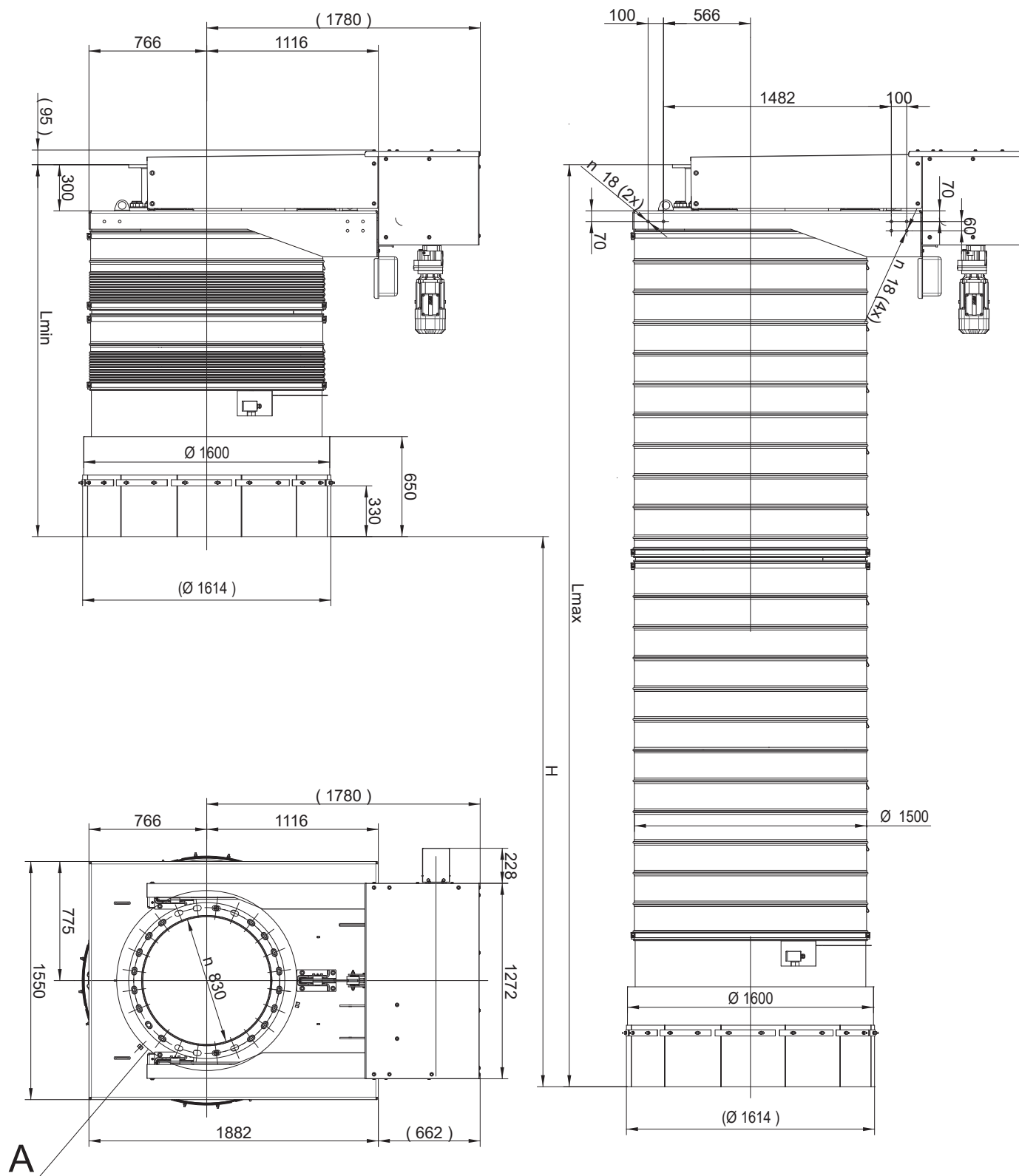


max. 1300 m³/h

Robust-design telescopic loading spout type NZO800H with the dustproof bell, rubber skirt and level indicator guarantees you a dustless loading of dry, abrasive bulk solids on trucks or railway cars.

2.3. HEAVY LINE

2.3.2. NZO800H



DESCRIPTION

telescopic loading spout for dust-free loading of dry, dusty bulk solids on stockpiles

OPERATION QUALITIES

- Inlet diameter DN300
- max. flow rate 250 m³/h
- particle size 0-50 mm
- pipe for connection to external filtration
- operating temperature -20 °C / +80 °C
- motor drive 1,6 kW
- loading conduit consisting of internal telescopic tubes and outer bellows

DESIGN

- electric winch with limit switches for highest and lowest position, emergency sensors for highest and lowest positions
- terminal box for cable connection
- level switch – 2x rotary
- dustproof bell with rubber skirt at the lower end of the loading spout

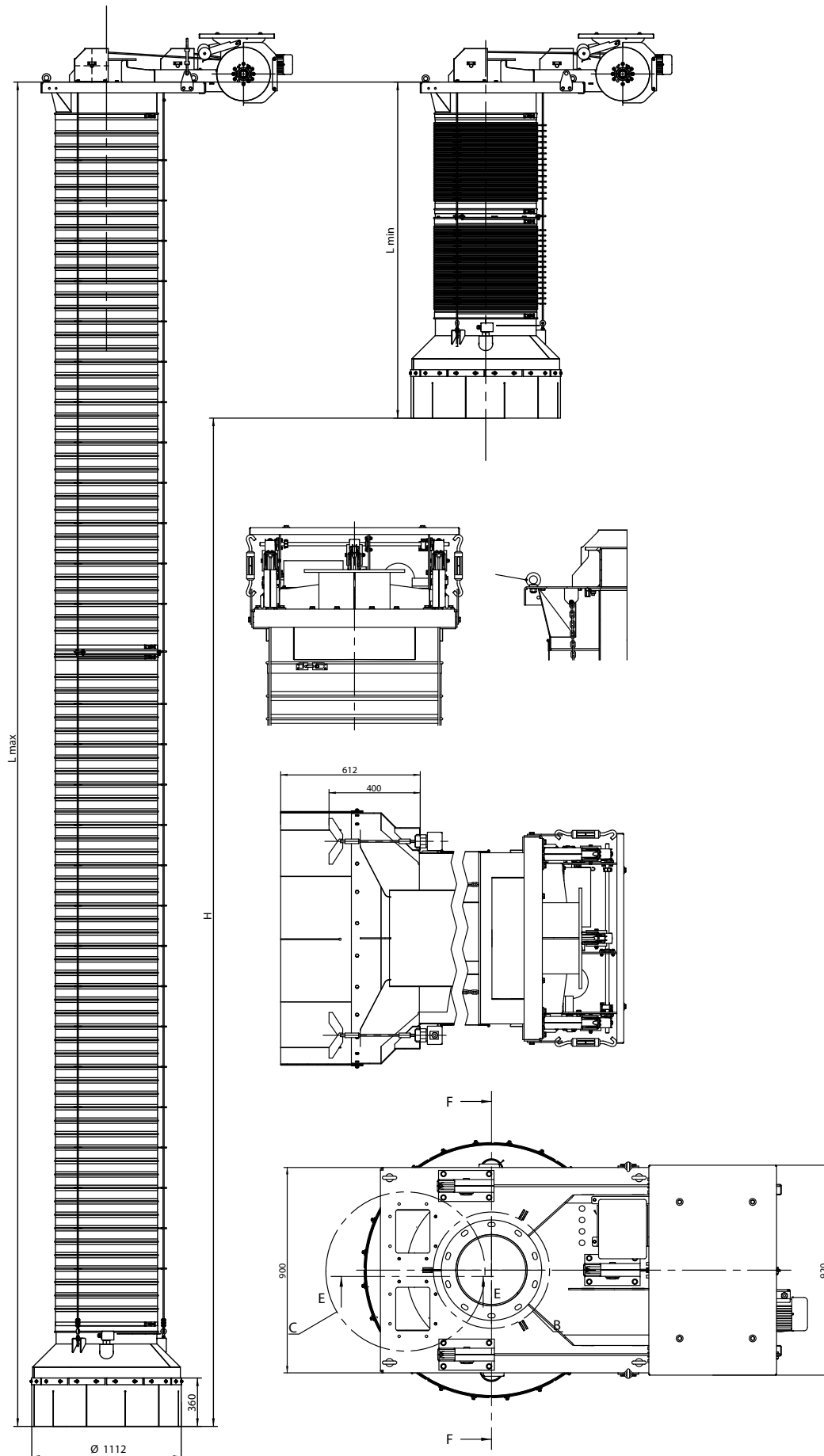
ADDITIONAL ACCESSORIES

- electric control box
- design for ATEX / non-standard temperature (-40 °C / +250 °C)

L _{min} (retracted length)	L _{max} (extracted length)	Travel (H)	Weight
2360	8 000	5 640	776
2500	10 000	7 500	900
2780	11 986	9 206	930
2890	14 000	11 110	1013
3800	15 000	11 200	1310



Telescopic loading spout type NZO300S with the dustproof bell, rubber skirt and level indicator guarantees you a dustless loading of dry, dusty bulk solids on stockpiles and ships.



DESCRIPTION

telescopic loading spout for dust-free loading of dry, dusty bulk solids on stockpiles

OPERATION QUALITIES

- inlet diameter DN600
- max. flow rate approx. 1000 m³/h
- particle size 0-100 mm
- pipe for connection to external filtration
- operating temperature -20 °C / +80 °C
- motor drive 3 or 4 kW
- loading conduit consisting of internal telescopic tubes and outer bellows

DESIGN

- electric winch with limit switches for highest and lowest position, emergency sensors for highest and lowest positions
- terminal box for cable connection
- level switch – 2x rotary
- dustproof bell with rubber skirt at the lower end of the loading spout

ADDITIONAL ACCESSORIES

- electric control box
- design for ATEX / non-standard temperature (-40°C/+250°C)

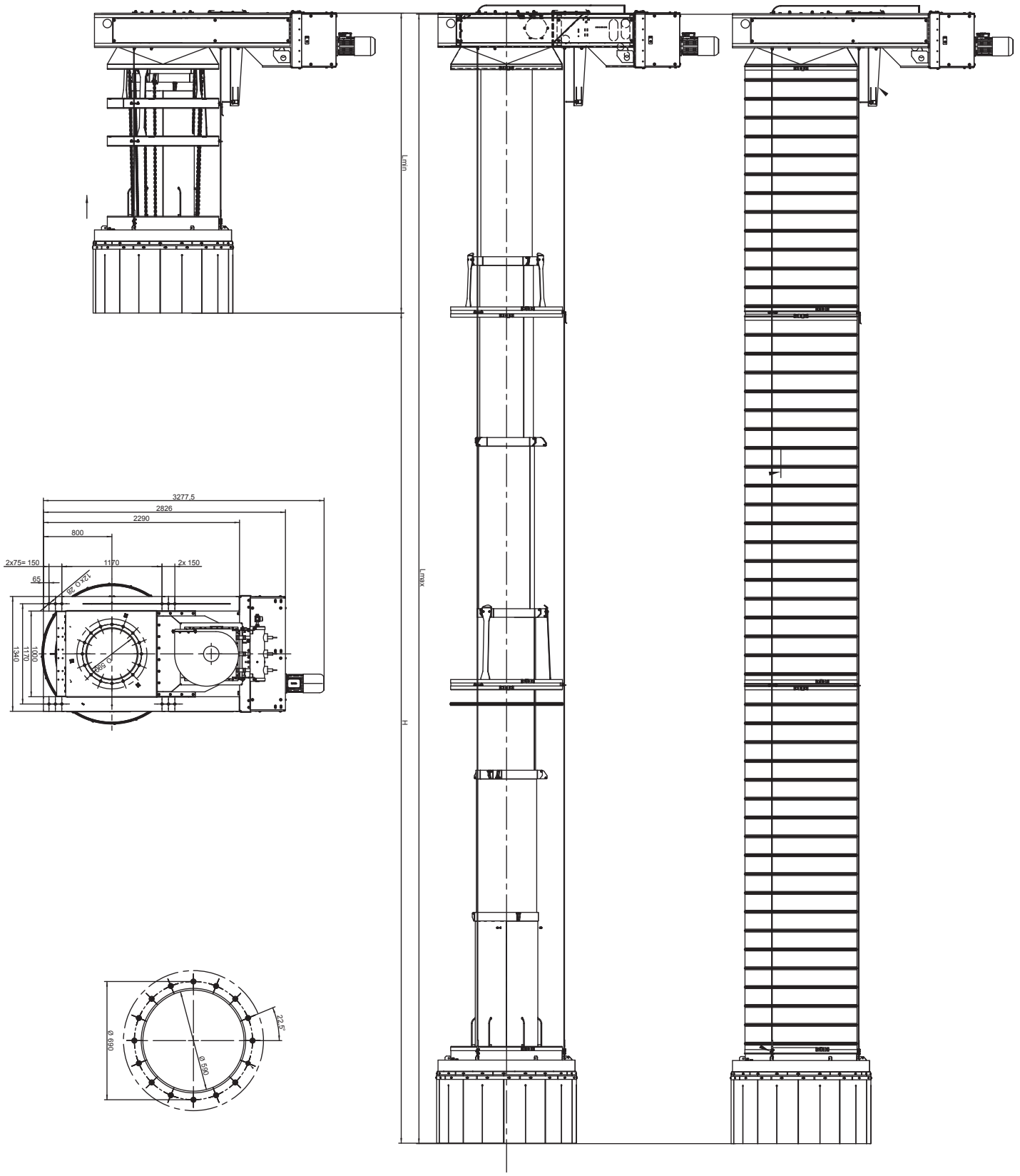
L _{min} (retracted length)	L _{max} (extracted length)	Travel (H)	Weight
2830	9 250	6 420	2108
3050	13 250	10 200	2300
3100	14 325	11 225	2334
3500	15 000	11 500	2755
3200	16 328	13 128	3126
3444	17 886	14 442	3100



Robust-design telescopic loading spout type NZO600DH with the dustproof bell, rubber skirt and level indicator guarantees you a dustless loading of dry, dusty bulk solids on stockpiles or ships.

3.2. HEAVY LINE

3.2.1. NZO600DH



DESCRIPTION

telescopic loading spout for dust-free loading of dry, dusty bulk solids on stockpiles

OPERATION QUALITIES

- max. flow rate 2000 m³/h
- particle size 0-400 mm
- inlet diameter DN900
- operating temperature -20 °C / +80 °C
- motor drive 5.5 / 7.5 / 9.2 / 11.0 kW
- loading conduit consisting of telescopic tubes

DESIGN

- electric winch with limit switches for highest and lowest position, emergency sensors for highest and lowest positions
- terminal box for cable connection
- level switch – 4x tilt type
- dustproof bell with rubber skirt at the lower end of the loading spout

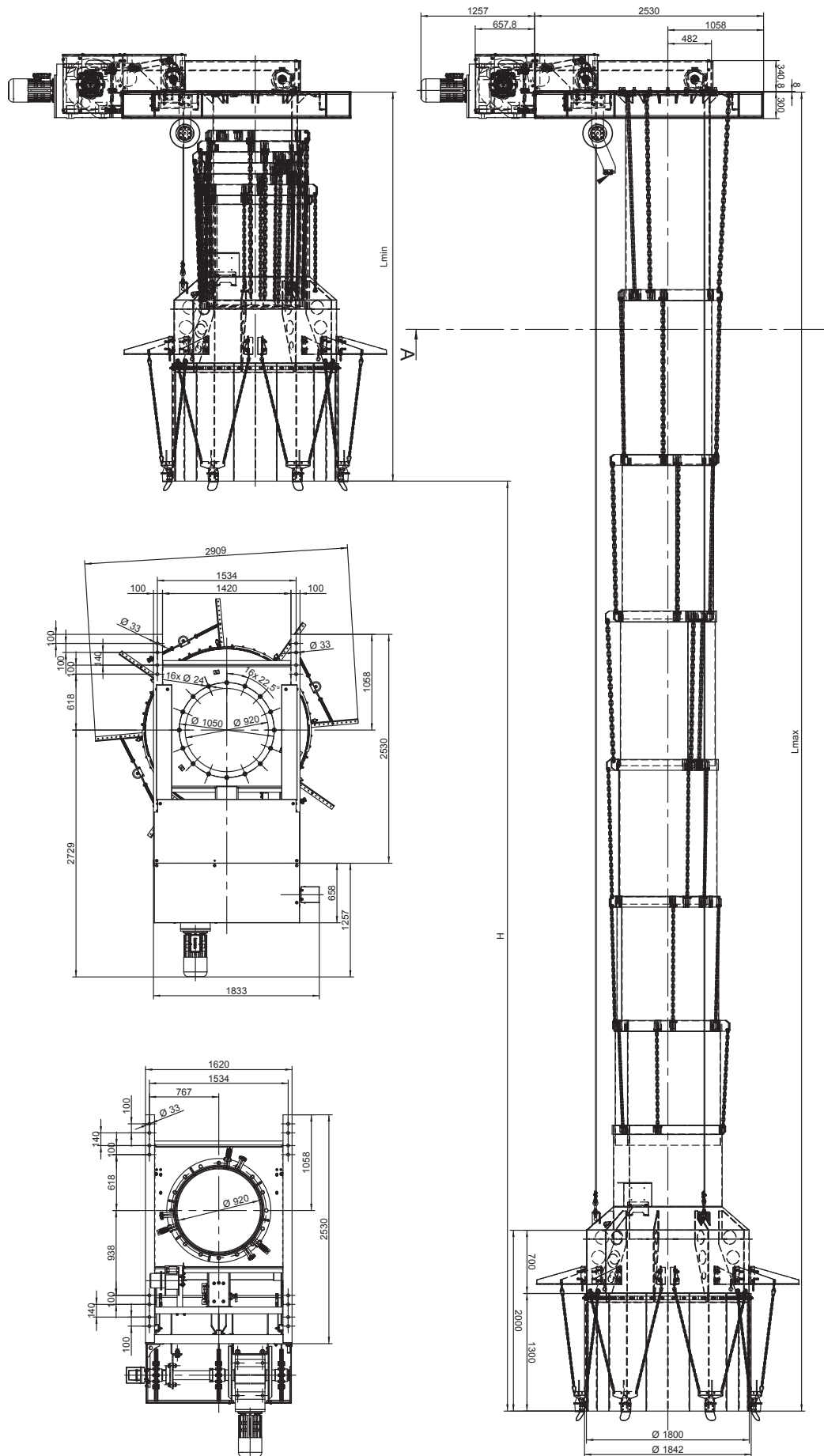
ADDITIONAL ACCESSORIES

- electric control box
- design for ATEX / non-standard temperature (-40°C/+250°C)

L _{min} (retracted length)	L _{max} (extracted length)	Travel (H)	Weight
3 350	9 808	6 458	3 370
4 300	14 580	10 280	4 450
4 500	15 750	11 250	4 630
4 900	17 075	12 175	4 780
5 160	19 133	13 973	5 065
5 440	21 614	16 174	5 380



Robust-design telescopic loading spout type NZO900DH with the dustproof bell, rubber skirt and four level indicators guarantees you a dustless loading of dry, dusty bulk solids on stockpiles or ships.



DESCRIPTION

telescopic loading spout for dust-free loading of dry, dusty bulk solids into trucks, railcars and tankers

OPERATION QUALITIES

- max. flow rate 250 m³/h
- particle size 0-40 mm
- inlet diameter DN300
- pipe Ø125 mm for connection to external filtration
- operating temperature -20 °C / +80 °C
- motor drive 0.55 kW
- loading conduit consisting of internal cones and outer bellows

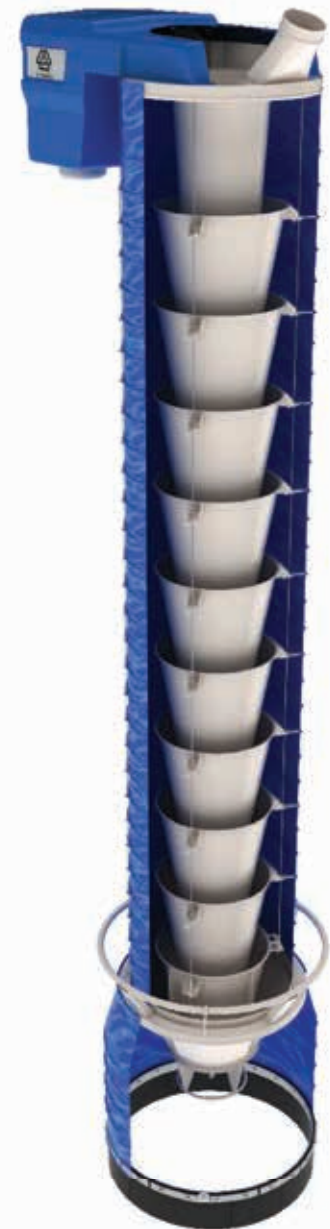
DESIGN

- electric winch with limit switches for highest and lowest position, emergency sensors for highest and lowest positions
- terminal box for cable connection
- level switch – vibrating / capacitance type
- bottom part consisting of sealing cone and dustproof bell with rubber skirt
- available also with electrical lifting of the dustproof bell

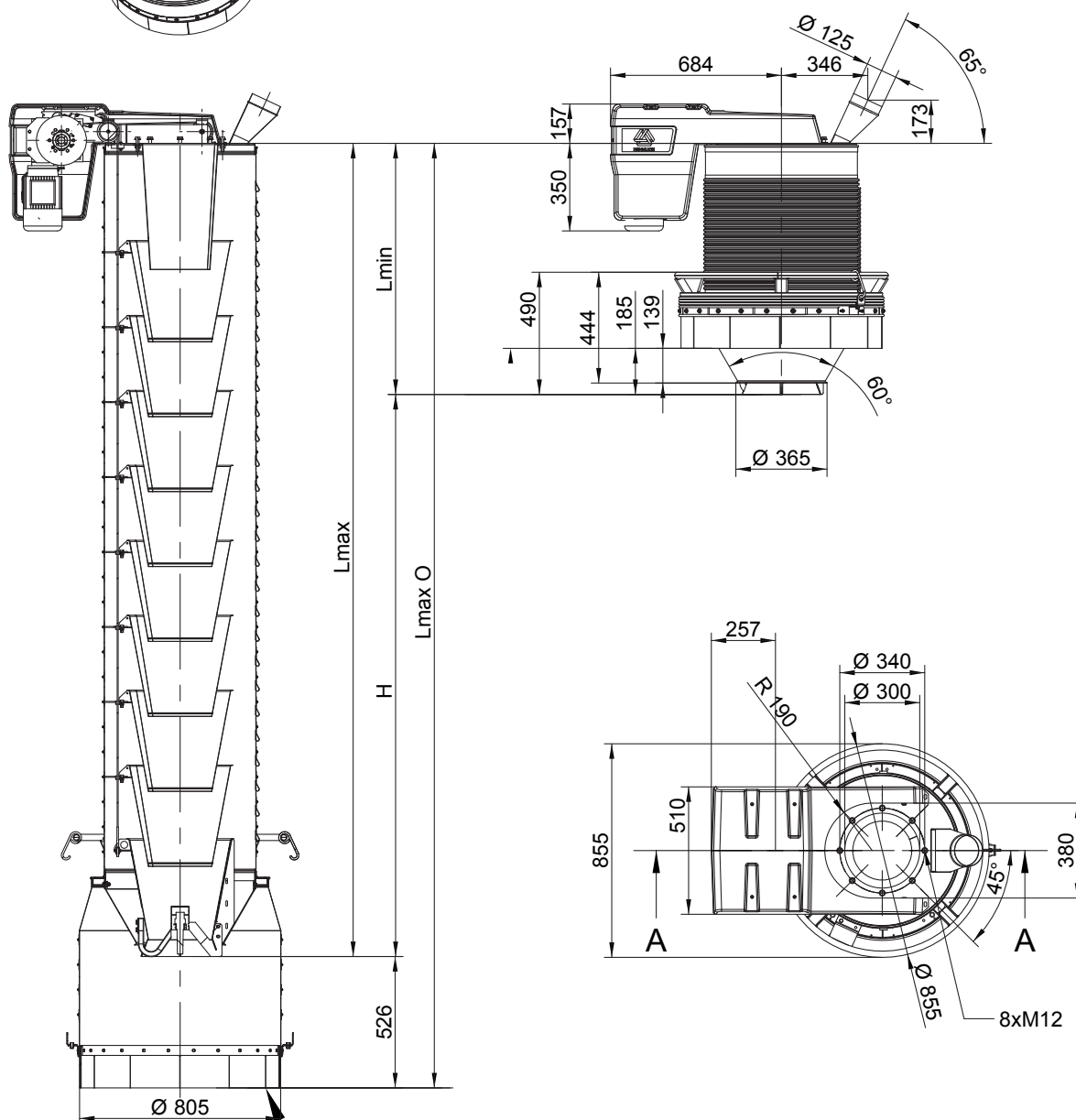
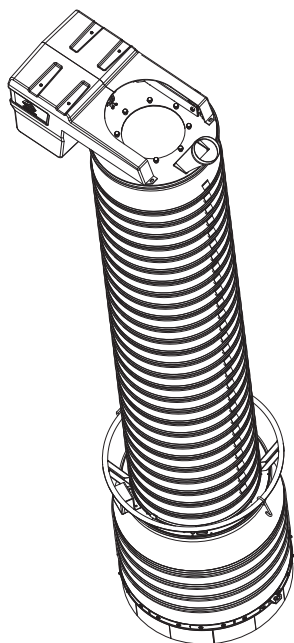
ADDITIONAL ACCESSORIES

- electric control box
- pendant or remote control
- vibration unit
- shut off valves (manual, electro, pneumatic)
- design for ATEX / non-standard temperature (-40 °C / +250 °C)

L _{min} (retracted length)	L _{max} (extracted length)	L _{max} (extracted length for open loading)	Travel (H)	Weight
1 005	3 255	3 781	2 250	131
1 200	3 700	4 084	2 500	181
1 400	4 900	5 260	3 500	200
1 700	5 700	5 884	4 000	222



Combined telescopic loading spout type NZK300ER for dustless loading of dry, dusty bulk solids into closed tankers, railway vehicles and open trucks or railway cars.



4.1. ECONOMIC LINE
4.1.2. NZKF300ER

DESCRIPTION

telescopic loading spout for dust-free loading of dry, dusty bulk solids into trucks, railcars and tankers

OPERATION QUALITIES

- max. flow rate 250 m³/h
- particle size 0-40 mm
- inlet diameter DN300
- built-in filter: flow rate 900 m³/h, filter area 17.5 m², residual concentration at the output < 10 mg/m³
- operating temperature -20 °C / +80 °C
- motor drive 0.55 kW
- loading conduit consisting of internal cones and outer bellows

DESIGN

- electric winch with limit switches for highest and lowest position, emergency sensors for highest and lowest positions
- terminal box for cable connection
- level switch – vibrating / capacitance type
- bottom part consisting of sealing cone and dustproof bell with rubber skirt
- available also with electrical lifting of the dustproof bell

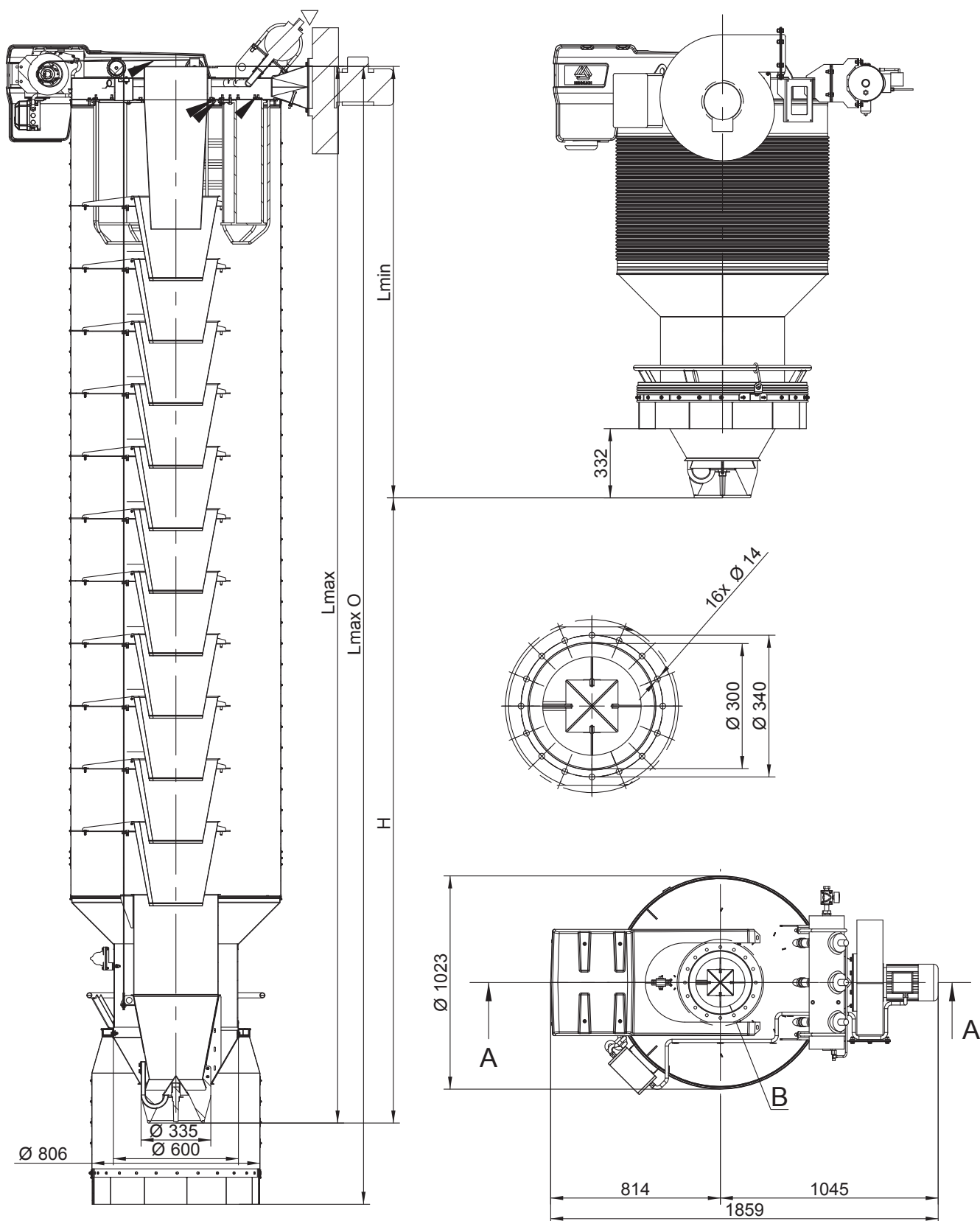
ADDITIONAL ACCESSORIES

- electric control box
- pendant or remote control
- vibration unit
- shut off valves (manual, electro, pneumatic)
- design for ATEX / non-standard temperature (-40 °C / +250 °C)

L _{min} (retracted lenght)	L _{max} (extracted lenght)	L _{max} (extracted lenght for open loading)	Travel (H)
1 900	3 400	3 790	1 500
1 970	4 470	4 860	2 500
2 070	5 070	5 460	3 000



Combined telescopic loading spout type NZKF300ER with powerful built-in filter guarantees you a dustless loading of dry, dusty bulk solids into closed tankers, railway vehicles and open trucks or railway cars.



5.1. HEAVY LINE

5.1.1. NZO800SL

DESCRIPTION

telescopic loading spout for dust-free loading of dry, dusty bulk solids on ships

OPERATION QUALITIES

- max. flow rate 4000 m³/h
- particle size 0-80 mm
- inlet diameter DN800
- operating temperature -20 °C / +80 °C
- motor drive 5.5 / 7.5 / 15.0 / 22.0 kW
- loading conduit consisting of tubes

DESIGN

- electric winch with limit switches for highest and lowest position, emergency sensors for highest and lowest positions
- terminal box for cable connection
- level switch – 4x tilt type
- special rotary shovel at the end of the spout for an effective material distribution into the ship

ADDITIONAL ACCESSORIES

- inner lining of tubes and shovel (Tivar88, PE UHMW etc.)
- protection cage
- pivoting mechanism

L _{min} (retracted length)	L _{max} (extracted length)	Travel (H)
4 000	8 800	4 800
5 000	12 000	7 000
6 000	16 000	10 000
8 000	20 000	12 000



Telescopic loading spout type NZO800SL with the distribution shovel for the high-capacity ship loading. Large cargo loading in a short time.

5.1. HEAVY LINE 5.1.1. NZO800SL

